

Active Recombinant Human CDK15 (Y103-F387) and CCNB1 (M1-V433) Protein, N-GST/6xHis tagged

Cat. No. CDK15-01H Lot. No. (See product label)

SPECIFICATION

Product Overview Human CDK15, internal fragment, amino acids Y103-F387 (as in NCBI/Protein entry NP_001248364.1), N-terminal GST-HIS6 fusion protein with a 3C cleavage site and human cyclin B1, full length, amino acids M1-V433 (as in NCBI/Protein entry NP_114172.4), N-terminal GST-HIS6 fusion protein with a Thrombin cleavage site, co-expressed in Sf9 insect cells

Species Human

Source Sf9 Cells

ProteinLength CDK15: Y103-F387
CCNB1:M1-V433

Bio-activity Specific kinase activity (Pi transfer): 1.9 pmol/μg × min
ATP-KM: 2.8 μM

Molecular Mass Theoretical MWCDK15: 60,389 Da
Theoretical MWCycB1: 78,919 Da

Storage At -80 centigrade
For complete recovery, mix well and spin before use. Product must not be stored in diluted solutions, aliquots below 10 μL are not advisable. Avoid repeated freeze-thaw cycles!

 Tel: 1-631-559-9269 1-516-512-3133

 Email: info@creative-biomart.com  Fax: 1-631-938-8127

 45-1 Ramsey Road, Shirley, NY 11967, USA

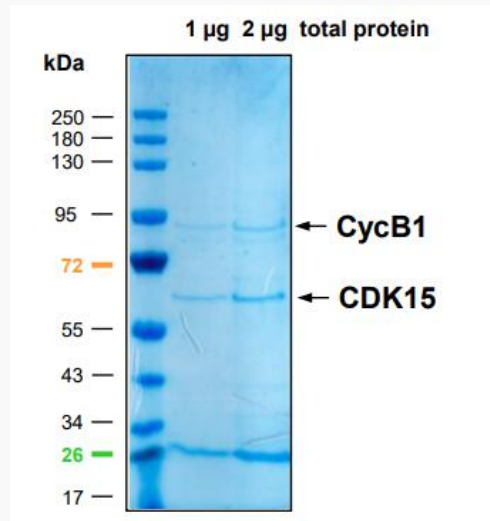
Concentration	0.156 µg/µL (Bradford method using BSA as standard protein)
Storage Buffer	50 mM HEPES pH 7.5, 100 mM NaCl, 5 mM DTT, 15 mM reduced glutathione, 20 % glycerol
GENE INFORMATION	
Gene Name	CDK15 cyclin dependent kinase 15 [Homo sapiens (human)]
Official Symbol	CDK15
Synonyms	CDK15; cyclin dependent kinase 15; PFTK2; ALS2CR7; PFTAIRE2; cyclin-dependent kinase 15; PFTAIRE protein kinase 2; amyotrophic lateral sclerosis 2 (juvenile) chromosome region, candidate 7; amyotrophic lateral sclerosis 2 chromosomal region candidate gene 7 protein; cell division protein kinase 15; serine/threonine protein kinase; serine/threonine-protein kinase ALS2CR7; serine/threonine-protein kinase PFTAIRE-2; EC 2.7.11.22
Gene ID	65061
mRNA Refseq	NM_001261435
Protein Refseq	NP_001248364
MIM	616147
UniProt ID	Q96Q40

 Tel: 1-631-559-9269 1-516-512-3133

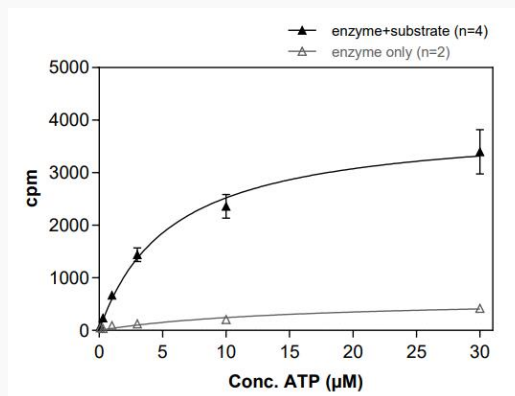
 Email: info@creative-biomart.com  Fax: 1-631-938-8127

 45-1 Ramsey Road, Shirley, NY 11967, USA

SDS-PAGE



Activity



 Tel: 1-631-559-9269 1-516-512-3133

 Email: info@creative-biomart.com  Fax: 1-631-938-8127

 45-1 Ramsey Road, Shirley, NY 11967, USA