

Recombinant Human CDK16 Protein, Myc/DDK-tagged, C13 and N15-labeled

Cat. No. CDK16-1009H Lot. No. (See product label)

SPECIFICATION

Product Overview	CDK16 MS Standard C13 and N15-labeled recombinant protein (NP_148978) with a C-terminal MYC/DDK tag, was expressed in HEK293 cells.
Species	Human
Source	HEK293
Description	The protein encoded by this gene belongs to the <i>cdc2/cdkx</i> subfamily of the ser/thr family of protein kinases. It may play a role in signal transduction cascades in terminally differentiated cells; in exocytosis; and in transport of secretory cargo from the endoplasmic reticulum. This gene is thought to escape X inactivation. Alternative splicing results in multiple transcript variants encoding different isoforms.
Molecular Mass	55.7 kDa
AA Sequence	MDRMKKIKRQLSMTLRGGRGIDKTNGAPEQIGLDESGGGGGSDPGEAPTRAAPGE LRSARGPLSSAPEIVHEDLKMGS DGESDQASATSSDEVQSPVRVRRMRNHPPRKIST EDINKRLSLPADIRLPEGYLEKLTNLNSPIFDKPLSRRLRRVSLSEIGFGKLETYIKLDKL GEGTYATVYK GKSKLTDNLVALKEIRLEHEEGAPCTAIREVSLLKDLKHANIVTLHDIH TEKSLTLVFEYLDKDLKQYLDDCGNIINMHNVKLFLFQLLRGLAYCHRQKVLHRDLKP QNLLINER GELKLADFGLARAKSIPTKYSNEVVTLWYRPPDILLGSTDYSTQIDMWG VGCIFYEMATGRPLFPGSTVEEQLHFIFRILGTPTEETWPGILSNEEFKTYNPKYRA EALLSHAPRLDSDGADLLTKLLQFEGRNRISAEDAMKHPFFLSLGERIHKLPDTTSIFA

 Tel: 1-631-559-9269 1-516-512-3133

 Email: info@creative-biomart.com  Fax: 1-631-938-8127

 45-1 Ramsey Road, Shirley, NY 11967, USA

	LKEIQLQKEASLRSSSMPDSGRPAFRVVDTEFTRTRPLEQKLISEEDLAANDILDYKD DDDKV
Purity	> 80% as determined by SDS-PAGE and Coomassie blue staining
Stability	Stable for 3 months from receipt of products under proper storage and handling conditions.
Storage	Store at -80 centigrade. Avoid repeated freeze-thaw cycles.
Concentration	50 µg/mL as determined by BCA
Storage Buffer	100 mM glycine, 25 mM Tris-HCl, pH 7.3.
GENE INFORMATION	
Gene Name	CDK16 cyclin-dependent kinase 16 [Homo sapiens (human)]
Official Symbol	CDK16
Synonyms	CDK16; cyclin-dependent kinase 16; PCTAIRE protein kinase 1, PCTK1; FLJ16665; PCTAIRE; PCTAIRE1; PCTGAIRE; serine/threonine protein kinase; PCTAIRE-motif protein kinase 1; cell division protein kinase 16; serine/threonine-protein kinase PCTAIRE-1; PCTK1;
Gene ID	5127
mRNA Refseq	NM_033018
Protein Refseq	NP_148978

 Tel: 1-631-559-9269 1-516-512-3133

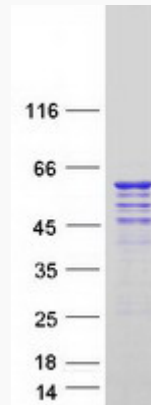
 Email: info@creative-biomart.com  Fax: 1-631-938-8127

 45-1 Ramsey Road, Shirley, NY 11967, USA

MIM 311550

UniProt ID Q00536

SDS-PAGE



 Tel: 1-631-559-9269 1-516-512-3133

 Email: info@creative-biomart.com  Fax: 1-631-938-8127

 45-1 Ramsey Road, Shirley, NY 11967, USA