

Active Recombinant Human CDK16 protein, GST-tagged

Cat. No. CDK16-952H Lot. No. (See product label)

SPECIFICATION

Product Overview	Active Recombinant Human CDK16 protein(Q00536-1) (Met 1-Phe 496) was expressed in Insect Cells, fused with the GST tag at the N-terminus.
Species	Human
Source	Insect Cells
ProteinLength	1-496 aa
Form	Lyophilized from sterile 20mM Tris, 500mM NaCl, pH 7.4, 2mM GSH, 0.5mM PMSF.
Bio-activity	Measured by its ability to bind biotinylated human GST-EK-YWHAH in a functional ELISA.
Molecular Mass	The recombinant human PCTK1/GST chimera consists of 720 amino acids and has a predicted molecular mass of 82 kDa. It migrates as an approximately 73 kDa band in SDS-PAGE under reducing conditions.
Endotoxin	< 1.0 EU per µg of the protein as determined by the LAL method.
Purity	> 82 % as determined by SDS-PAGE
Storage	Store it under sterile conditions at -20°C to -80°C upon receiving. Recommend to aliquot the protein into smaller quantities for optimal storage. Avoid repeated freeze-thaw cycles.

 Tel: 1-631-559-9269 1-516-512-3133

 Email: info@creative-biomart.com  Fax: 1-631-938-8127

 45-1 Ramsey Road, Shirley, NY 11967, USA

Reconstitution It is recommended that sterile water be added to the vial to prepare a stock solution of 0.2 ug/ul. Centrifuge the vial at 4°C before opening to recover the entire contents.

GENE INFORMATION

Gene Name [CDK16 cyclin-dependent kinase 16 \[Homo sapiens \]](#)

Official Symbol [CDK16](#)

Synonyms CDK16; cyclin-dependent kinase 16; PCTAIRE protein kinase 1 , PCTK1; FLJ16665; PCTAIRE; PCTAIRE1; PCTGAIRE; serine/threonine protein kinase; PCTAIRE-motif protein kinase 1; cell division protein kinase 16; serine/threonine-protein kinase PCTAIRE-1; PCTK1;

Gene ID [5127](#)

mRNA Refseq [NM_001170460](#)

Protein Refseq [NP_001163931](#)

MIM [311550](#)

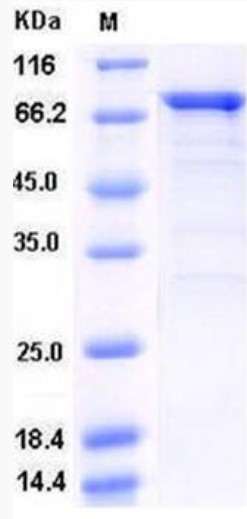
UniProt ID [Q00536](#)

 Tel: 1-631-559-9269 1-516-512-3133

 Email: info@creative-biomart.com  Fax: 1-631-938-8127

 45-1 Ramsey Road, Shirley, NY 11967, USA

SDS-PAGE



 Tel: 1-631-559-9269 1-516-512-3133

 Email: info@creative-biomart.com  Fax: 1-631-938-8127

 45-1 Ramsey Road, Shirley, NY 11967, USA