

Active Recombinant Full Length Human CDK19 Protein, GST-tagged

Cat. No. CDK19-2845HF **Lot. No.** (See product label)

SPECIFICATION

Product Overview	Full-length human CDC2L6 [1-502(end) amino acids of accession number NP_055891.1] was co- expressed as N-terminal GST-fusion protein (85 kDa) with GST-CyclinC [1-283(end) amino acids of accession number NP_005181.2] using baculovirus expression system. GST-CDC2L6 was purified by using glutathione sepharose chromatography.
Species	Human
Source	Sf21 Cells
ProteinLength	1-502
Form	50 mM Tris-HCl, 150 mM NaCl, 0.05% Brij35, 1 mM DTT, 10% glycerol, pH7.5
Bio-activity	The activity was determined by ELISA. The enzyme was incubated with biotinylated peptide in streptavidin-coated ELISA plate. Phosphorylation was detected by anti-phospho antibody and HRP- labeled anti-rabbit IgG(or HRP-labeled anti-mouse IgG).
Purity	92%
Applications	SDS-PAGE
Storage	Store at -80C. Avoid repeating freeze-thaws.

 Tel: 1-631-559-9269 1-516-512-3133

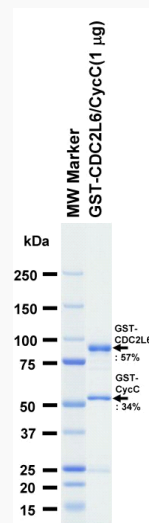
 Email: info@creative-biomart.com  Fax: 1-631-938-8127

 45-1 Ramsey Road, Shirley, NY 11967, USA

GENE INFORMATION

Gene Name	cyclin-dependent kinase 19
Official Symbol	CDK19
Synonyms	CDK19;CDC2L6;CDK11;bA346C16.3;KIAA1028
Protein Refseq	NP_055891.1
UniProt ID	Q9BWU1

SDS-PAGE

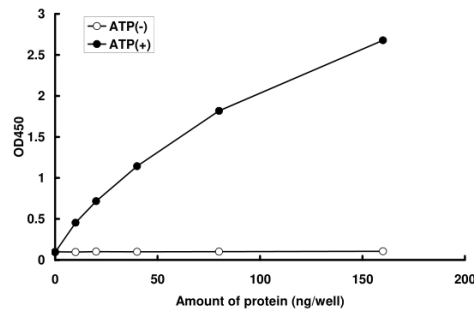


The purity was assessed by SDS-PAGE/CBB staining.

 Tel: 1-631-559-9269 1-516-512-3133

 Email: info@creative-biomart.com  Fax: 1-631-938-8127

 45-1 Ramsey Road, Shirley, NY 11967, USA

Activity data**Activity data**

The activity was determined by ELISA. The enzyme was incubated with biotinylated peptide in streptavidin-coated ELISA plate. Phosphorylation was detected by anti-phospho antibody and HRP- labeled anti-rabbit IgG(or HRP-labeled anti-mouse IgG).

Tel: 1-631-559-9269 1-516-512-3133

Email: info@creative-biomart.com Fax: 1-631-938-8127

45-1 Ramsey Road, Shirley, NY 11967, USA