

## Recombinant Human CDK19 Protein, GST-tagged

Cat. No. CDK19-5145H Lot. No. (See product label)

### SPECIFICATION

<b>Product Overview</b>	Human CDC2L6 full-length ORF ( NP_055891.1, 1 a.a. - 502 a.a.) recombinant protein with GST-tag at N-terminal.
<b>Species</b>	Human
<b>Source</b>	Wheat Germ
<b>Description</b>	This gene encodes a protein that is one of the components of the Mediator co-activator complex. The Mediator complex is a multi-protein complex required for transcriptional activation by DNA binding transcription factors of genes transcribed by RNA polymerase II. The protein encoded by this gene is similar to cyclin-dependent kinase 8 which can also be a component of the Mediator complex. Alternative splicing results in multiple transcript variants encoding distinct isoforms. [provided by RefSeq, Jul 2014]
<b>Molecular Mass</b>	83.2 kDa
<b>AA Sequence</b>	MDYDFKAKLAAERERVELFEYEGCKVGRGTYGHVYKARRKDGKDEKEYALKQIE GTGISM SACREIALLRELKHPNVIALQKVFLSHSDRKVWLLFDYAEHDLWHIIKFHRA SKANKKPMQLPRSMVKSLLYQILDGIHYLHANWVLHRDLK PANILVMGEGPERGRV KIADMGFARLFNSPLKPLADLDPVVVTFWYRAPELLLGARHYTKAIDIWAIGCIFAELL TSEPIFHCRQEDIKTSNPFHHDQLDRIFSVMGFPADKDWEDIRKMPEYPTLQKDFRR TTYANSSLIK YMEKHVKVPDSKVFLLLQKLLTMDPTKRITSEQALQDPYFQEDPLPTL DVFAGCQIPYPKREFLNEDDPEEKGDKNQQQQNQHQHQQPTAPPQQAAPPQAPP

 Tel: 1-631-559-9269 1-516-512-3133

 Email: [info@creative-biomart.com](mailto:info@creative-biomart.com)  Fax: 1-631-938-8127

 45-1 Ramsey Road, Shirley, NY 11967, USA

PQQNSTQTNGTAGGAGAGVGGTGAGLQHSQDSSLNQVPPNKKPRLGPPSGANSGG  
 PVMPSDYQHSSSRLNYQSSVQGSSQSQSTLGYSSSSQSSQYHPHQAHRY

<b>Applications</b>	Enzyme-linked Immunoabsorbent Assay Western Blot (Recombinant protein) Antibody Production Protein Array
<b>Notes</b>	Best use within three months from the date of receipt of this protein.
<b>Storage</b>	Store at -80 centigrade. Aliquot to avoid repeated freezing and thawing.
<b>Storage Buffer</b>	50 mM Tris-HCl, 10 mM reduced Glutathione, pH=8.0 in the elution buffer.

## GENE INFORMATION

<b>Gene Name</b>	CDK19 cyclin dependent kinase 19 [ Homo sapiens (human) ]
<b>Official Symbol</b>	CDK19
<b>Synonyms</b>	CDC2L6; CDK19; cyclin dependent kinase 19; CDK11; CDC2L6; bA346C16.3; cyclin-dependent kinase 19; CDC2-related protein kinase 6; CDK8-like cyclin-dependent kinase; cell division cycle 2-like 6 (CDK8-like); cell division cycle 2-like protein kinase 6; cell division protein kinase 19; cyclin dependent kinase 19 variant 2; cyclin-dependent kinase (CDC2-like) 11; cyclin-dependent kinase 11; death-preventing kinase; EC 2.7.11.22
<b>Gene ID</b>	23097
<b>mRNA Refseq</b>	NM_001300960

 Tel: 1-631-559-9269 1-516-512-3133

 Email: [info@creative-biomart.com](mailto:info@creative-biomart.com)  Fax: 1-631-938-8127

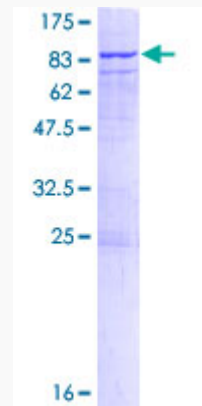
 45-1 Ramsey Road, Shirley, NY 11967, USA

**Protein Refseq** NP\_001287889

**MIM** 614720

**UniProt ID** Q9BWU1

**Quality Control  
Testing**



12.5% SDS-PAGE Stained with Coomassie Blue.

 Tel: 1-631-559-9269 1-516-512-3133

 Email: [info@creative-biomart.com](mailto:info@creative-biomart.com)  Fax: 1-631-938-8127

 45-1 Ramsey Road, Shirley, NY 11967, USA