

Recombinant Human CDK19/CCNC protein, GST-tagged

Cat. No. CDK19-CCNC-310H Lot. No. (See product label)

SPECIFICATION

Product Overview	Recombinant full-length human CDK19/CCNC was expressed by baculovirus in Sf9 insect cells using an N-terminal GST tag.
Species	Human
Source	Insect Cells
Description	CDK19/Cyclin C is a member of the p34Cdc2 protein kinase family which are known to be essential for eukaryotic cell cycle control. CDK11/Cyclin C gene complex may harbor 1 or more tumor suppressor genes affected by chromosome 1p36 modifications in neuroblastoma. CDK11/Cyclin C expression is regulated during murine embryogenesis and its activity is coordinately regulated with that of p34 (cdc2) during the cell cycle.
Form	50mM Tris-HCl, pH 7.5, 50mM NaCl, 0.25mM DTT, 0.1mM EDTA, 0.1mM PMSF, 25% glycerol
Molecular Mass	CDK19 ~92 kDa, and CCNC ~55 kDa
Purity	The purity of CDK19/CCNC was determined to be >90% by densitometry.
Applications	Enzyme Assay; WB
Stability	1 year at -70 centigrade

 Tel: 1-631-559-9269 1-516-512-3133

 Email: info@creative-biomart.com  Fax: 1-631-938-8127

 45-1 Ramsey Road, Shirley, NY 11967, USA

Storage Store product at -70 centigrade. For optimal storage, aliquot target into smaller quantities after centrifugation and store at recommended temperature. For most favorable performance, avoid repeated handling and multiple freeze/thaw cycles.

Concentration 0.1 µg/µL

GENE INFORMATION

Gene Name cyclin dependent kinase 19 [Homo sapiens (human)]; cyclin C [Homo sapiens (human)]

Official Symbol CDK19; CCNC

Synonyms CDK11; CDC2L6; bA346C16.3; CyclinC; CCNC; CycC

Gene ID 23097; 892

mRNA Refseq NM_015076; NM_005190

Protein Refseq NP_055891; NP_005181.2

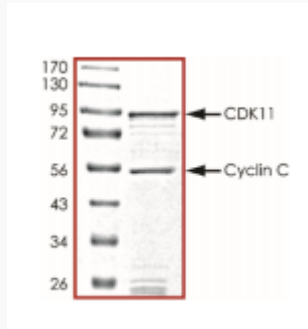
MIM 614720; 123838

UniProt ID Q9BWU1; P24863

 Tel: 1-631-559-9269 1-516-512-3133

 Email: info@creative-biomart.com  Fax: 1-631-938-8127

 45-1 Ramsey Road, Shirley, NY 11967, USA



 Tel: 1-631-559-9269 1-516-512-3133

 Email: info@creative-biomart.com  Fax: 1-631-938-8127

 45-1 Ramsey Road, Shirley, NY 11967, USA