

Recombinant Human CDK2 Protein, His-tagged

Cat. No. CDK2-01H **Lot. No.** (See product label)

SPECIFICATION

Product Overview	Recombinant Human CDK2 Protein, fused to His-tag, was expressed in E. coli.
Species	Human
Source	E.coli
Description	This gene encodes a member of a family of serine/threonine protein kinases that participate in cell cycle regulation. The encoded protein is the catalytic subunit of the cyclin-dependent protein kinase complex, which regulates progression through the cell cycle. Activity of this protein is especially critical during the G1 to S phase transition. This protein associates with and regulated by other subunits of the complex including cyclin A or E, CDK inhibitor p21Cip1 (CDKN1A), and p27Kip1 (CDKN1B). Alternative splicing results in multiple transcript variants.
Form	Liquid
Molecular Mass	36 kDa
AA Sequence	Glu2-Leu298
Endotoxin	Not determined
Purity	> 95%
Applications	ELISA, EIA, Western Blotting, Dot Blotting, Immunoprecipitation, Protein Array

 Tel: 1-631-559-9269 1-516-512-3133

 Email: info@creative-biomart.com  Fax: 1-631-938-8127

 45-1 Ramsey Road, Shirley, NY 11967, USA

Usage	This product is furnished for LABORATORY RESEARCH USE ONLY. Not for diagnostic or therapeutic use.
Storage	Upon arrival, the protein may be stored for 2 weeks at 4 centigrade. For long term storage, it is recommended to store at -20 centigrade or -80 centigrade in appropriate aliquots. Avoid repeated freeze-thaw cycles.
Concentration	Lot specific (see the label on the vial)
Preservative	None
Reconstitution	Supplied as a 0.2 um filtered solution in PBS (pH 7.4).
Shipping	Ice packs
tmpcolum67	cyclin dependent kinase 2

GENE INFORMATION

Gene Name	CDK2 cyclin dependent kinase 2 [Homo sapiens (human)]
Official Symbol	CDK2
Synonyms	CDKN2; p33(CDK2); Cyclin-dependent kinase 2; Cell division protein kinase 2
Gene ID	1017
mRNA Refseq	NM_001798.5
Protein Refseq	NP_001789.2

 Tel: 1-631-559-9269 1-516-512-3133

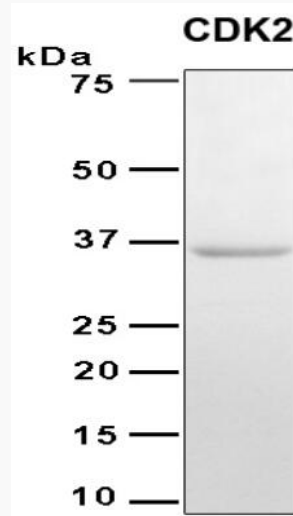
 Email: info@creative-biomart.com  Fax: 1-631-938-8127

 45-1 Ramsey Road, Shirley, NY 11967, USA

MIM 116953

UniProt ID P24941

SDS-PAGE



SDS-PAGE under reducing conditions and visualized by Coomassie blue staining.

 Tel: 1-631-559-9269 1-516-512-3133

 Email: info@creative-biomart.com  Fax: 1-631-938-8127

 45-1 Ramsey Road, Shirley, NY 11967, USA