

Active Recombinant Human CDK2 Protein, GST-Tagged

Cat. No. CDK2-1003H Lot. No. (See product label)

SPECIFICATION

Product Overview	Human CDK2 (NP_001789.2, 1 a.a. - 298 a.a.) and CCNA2 (NP_001228.1, 1 a.a. - 432 a.a.) full-length recombinant protein with with GST tag expressed in baculovirus infected Sf21 cells.
Species	Human
Source	Insect Cells
Description	This gene encodes a member of a family of serine/threonine protein kinases that participate in cell cycle regulation. The encoded protein is the catalytic subunit of the cyclin-dependent protein kinase complex, which regulates progression through the cell cycle. Activity of this protein is especially critical during the G1 to S phase transition. This protein associates with and regulated by other subunits of the complex including cyclin A or E, CDK inhibitor p21Cip1 (CDKN1A), and p27Kip1 (CDKN1B). Alternative splicing results in multiple transcript variants. [provided by RefSeq, Mar 2014]
Form	Liquid
Bio-activity	The activity was measured by off-chip mobility shift assay. The enzyme was incubated with fluorescence-labeled substrate and Mg(or Mn)/ATP. The phosphorylated and unphosphorylated substrates were separated and detected by LabChip 3000. Substrate: Histone H1 peptide. ATP: 100 µM.

 Tel: 1-631-559-9269 1-516-512-3133

 Email: info@creative-biomart.com  Fax: 1-631-938-8127

 45-1 Ramsey Road, Shirley, NY 11967, USA

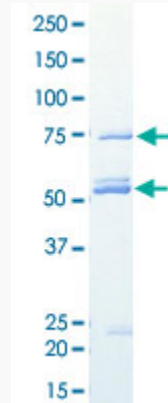
Molecular Mass	61 kDa
Purity	91 % by SDS-PAGE/CBB staining
Applications	Functional Study SDS-PAGE
Storage	Store at -80 centigrade. Aliquot to avoid repeated freezing and thawing.
Storage Buffer	In 50 mM Tris-HCl, 150 mM NaCl, pH 7.5 (0.1% CHAPS, 1 mM DTT, 10% glycerol)
GENE INFORMATION	
Gene Name	CDK2 cyclin-dependent kinase 2 [Homo sapiens]
Official Symbol	CDK2
Synonyms	CDK2; cyclin-dependent kinase 2; p33 protein kinase; cell division kinase 2; cdc2-related protein kinase; cell division protein kinase 2; p33(CDK2);
Gene ID	1017
mRNA Refseq	NM_001798
Protein Refseq	NP_001789
MIM	116953
UniProt ID	P24941

 Tel: 1-631-559-9269 1-516-512-3133

 Email: info@creative-biomart.com  Fax: 1-631-938-8127

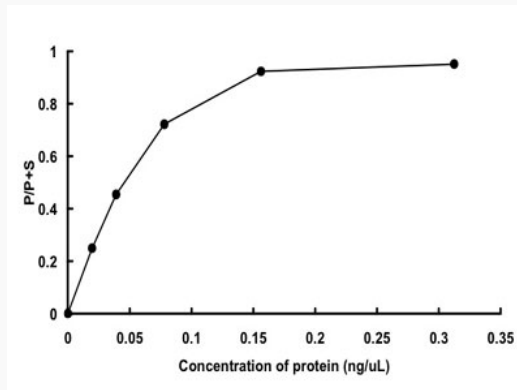
 45-1 Ramsey Road, Shirley, NY 11967, USA

**Quality Control
Testing**



Loading 1 μ g protein in SDS-PAGE

**Result of activity
analysis**



 Tel: 1-631-559-9269 1-516-512-3133

 Email: info@creative-biomart.com  Fax: 1-631-938-8127

 45-1 Ramsey Road, Shirley, NY 11967, USA