

Recombinant Human CDK2 Protein, Myc/DDK-tagged, C13 and N15-labeled

Cat. No. CDK2-5392H Lot. No. (See product label)

SPECIFICATION

Product Overview

CDK2 MS Standard C13 and N15-labeled recombinant protein (NP_001789) with a C-terminal MYC/DDK tag, was expressed in HEK293 cells.

Species

Human

Source

HEK293

Description

This gene encodes a member of a family of serine/threonine protein kinases that participate in cell cycle regulation. The encoded protein is the catalytic subunit of the cyclin-dependent protein kinase complex, which regulates progression through the cell cycle. Activity of this protein is especially critical during the G1 to S phase transition. This protein associates with and regulated by other subunits of the complex including cyclin A or E, CDK inhibitor p21Cip1 (CDKN1A), and p27Kip1 (CDKN1B). Alternative splicing results in multiple transcript variants.

Molecular Mass

33.9 kDa

AA Sequence

MENFQKVEKIGEGTYGVVYKARNKLTGEVVALKKIRLDTETEGVPSTAIRESLLKELN
HPNIVKLLDVIHTENKLYLVFEFLHQDLKKFMDASALTGIPLPLIKSYLFQLLQGLAFCH
SHRVLHRDLKPNLLINTEGAIKLADFGRLARAFGVPVRTYTHEVVTLWYRAPEILLGC
KYYSTAVDIWSLGCIFAEMVTRRALFPGDSEIDQLFRIFRTLGTPEVVWPGVTSMP
DYKPSFPKWARQDFSKVVPPLDEDGRSLLSQMLHYDPNKRISAKAALAHPPFQDVT
KPVPHLRLTRTRPLEQKLISEEDLAANDILDYKDDDDKV

Tel: 1-631-559-9269 1-516-512-3133

Email: info@creative-biomart.com Fax: 1-631-938-8127

45-1 Ramsey Road, Shirley, NY 11967, USA

| | |
|-----------------------|--|
| Purity | > 80% as determined by SDS-PAGE and Coomassie blue staining |
| Stability | Stable for 3 months from receipt of products under proper storage and handling conditions. |
| Storage | Store at -80 centigrade. Avoid repeated freeze-thaw cycles. |
| Concentration | 50 µg/mL as determined by BCA |
| Storage Buffer | 100 mM glycine, 25 mM Tris-HCl, pH 7.3. |

GENE INFORMATION

| | |
|------------------------|--|
| Gene Name | CDK2 cyclin-dependent kinase 2 [Homo sapiens (human)] |
| Official Symbol | CDK2 |
| Synonyms | CDK2; cyclin-dependent kinase 2; p33 protein kinase; cell division kinase 2; cdc2-related protein kinase; cell division protein kinase 2; p33(CDK2); |
| Gene ID | 1017 |
| mRNA Refseq | NM_001798 |
| Protein Refseq | NP_001789 |
| MIM | 116953 |
| UniProt ID | P24941 |

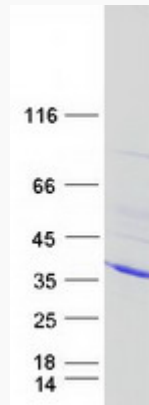
 Tel: 1-631-559-9269 1-516-512-3133

 Email: info@creative-biomart.com  Fax: 1-631-938-8127

 45-1 Ramsey Road, Shirley, NY 11967, USA



SDS-PAGE



☎ Tel: 1-631-559-9269 1-516-512-3133

☎ Email: info@creative-biomart.com ☎ Fax: 1-631-938-8127

☎ 45-1 Ramsey Road, Shirley, NY 11967, USA