

Active Recombinant Full Length Human CDK2 Protein, GST-tagged

Cat. No. CDK2-8450HF Lot. No. (See product label)

SPECIFICATION

Product Overview Full-length human CDK2 [1-298(end) amino acids of accession number NP_001789.2] was co-expressed as N-terminal GST-tagged protein (61 kDa) with CyclinE1 [1-410(end) amino acids of accession number NP_001229.1] using baculovirus expression system. GST-CDK2 was purified by using glutathione sepharose chromatography.

Species Human

Source Sf21 Cells

ProteinLength 1-298(end)

Form 50 mM Tris-HCl, 150 mM NaCl, 0.05% Brij35, 1 mM DTT, 10% glycerol, pH7.5

Bio-activity The activity was measured by off-chip mobility shift assay. The enzyme was incubated with fluorescence-labeled substrate and Mg(or Mn)/ATP. The phosphorylated and unphosphorylated substrates were separated and detected by LabChip™3000.

Purity 69%

Applications SDS-PAGE

Storage Store at -80C. Avoid repeating freeze-thaws.

 Tel: 1-631-559-9269 1-516-512-3133

 Email: info@creative-biomart.com  Fax: 1-631-938-8127

 45-1 Ramsey Road, Shirley, NY 11967, USA

GENE INFORMATION

Gene Name cyclin-dependent kinase 2

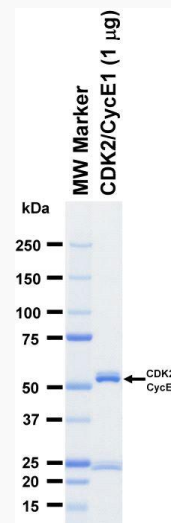
Official Symbol CDK2

Synonyms CDK2;CDKN2;p33(CDK2)

Protein Refseq [NP_001789.2](#)

UniProt ID [P24941](#)


SDS-PAGE

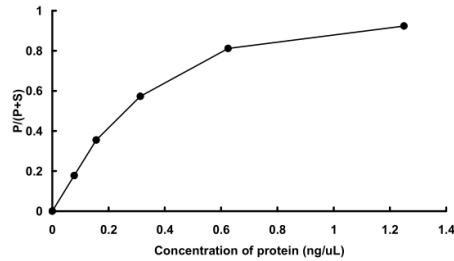


The purity was assessed by SDS-PAGE/CBB staining.

 Tel: 1-631-559-9269 1-516-512-3133

 Email: info@creative-biomart.com  Fax: 1-631-938-8127

 45-1 Ramsey Road, Shirley, NY 11967, USA

Activity data**Activity data**

The activity was measured by off-chip mobility shift assay. The enzyme was incubated with fluorescence-labeled substrate and Mg(or Mn)/ATP. The phosphorylated and unphosphorylated substrates were separated and detected by LabChip™3000.

 Tel: 1-631-559-9269 1-516-512-3133

 Email: info@creative-biomart.com  Fax: 1-631-938-8127

 45-1 Ramsey Road, Shirley, NY 11967, USA