

Active Recombinant Human CDK2/CCNE2 protein, GST-tagged

Cat. No. CDK2-CCNE2-311H **Lot. No.** (See product label)

SPECIFICATION

Product Overview	Recombinant full-length human CDK2 and CCNE2 were co-expressed by baculovirus in Sf9 insect cells using an N-terminal GST tag on both proteins.
Species	Human
Source	Insect Cells
Description	CDK2 is a member of the Cyclin-Dependent Kinase family that is ubiquitously expressed. CDK2 is a catalytic subunit of the cyclin-dependent protein kinase complex, whose activity is restricted to the G1-S phase, and essential for cell cycle G1/S phase transition. CDK2 associates with and is regulated by the regulatory subunits of the complex including Cyclin A or E, CDK inhibitor p21Cip1 (CDKN1A) and p27Kip1 (CDKN1B). CDK2 phosphorylates multiple cellular substrates including SMAD3 and FOXO1. Phosphorylation of FOXO1 leads to its inhibition.
Form	50mM Tris-HCl, pH 7.5, 150mM NaCl, 10mM glutathione, 0.1mM EDTA, 0.25mM DTT, 0.1mM PMSF, 25% glycerol
Bio-activity	The specific activity of CDK2/CyclinE2 was determined to be 60nmol/min/mg as per activity protocol.
Molecular Mass	CDK2 ~58 kDa and CCNE2 ~72 kDa
Purity	The purity of CDK2/CCNE2 was determined to be >90% by densitometry.

 Tel: 1-631-559-9269 1-516-512-3133

 Email: info@creative-biomart.com  Fax: 1-631-938-8127

 45-1 Ramsey Road, Shirley, NY 11967, USA

Applications	Kinase Assay; WB
Stability	1 year at -70 centigrade
Storage	Store product at -70 centigrade. For optimal storage, aliquot target into smaller quantities after centrifugation and store at recommended temperature. For most favorable performance, avoid repeated handling and multiple freeze/thaw cycles.
Concentration	0.1 µg/µL

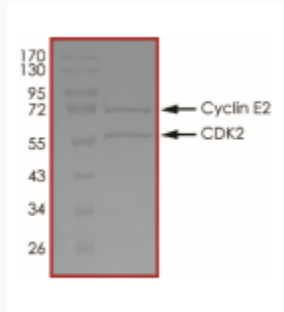
GENE INFORMATION

Gene Name	cyclin dependent kinase 2 [Homo sapiens (human)]; cyclin E2 [Homo sapiens (human)]
Official Symbol	CDK2; CCNE2
Synonyms	CDKN2; p33; CDK2; CCNE2; CyclinE2
Gene ID	1017; 9134
mRNA Refseq	NM_001798; NM_057749
Protein Refseq	NP_001789; NP_001228
MIM	116953; 603775
UniProt ID	P24941; P24864

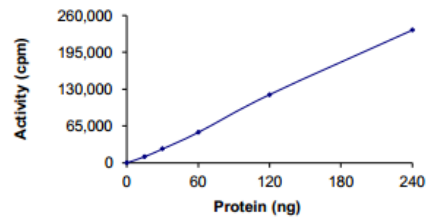
 Tel: 1-631-559-9269 1-516-512-3133

 Email: info@creative-biomart.com  Fax: 1-631-938-8127

 45-1 Ramsey Road, Shirley, NY 11967, USA



Specific Activity



The specific activity of CDK2/CyclinE2 was determined to be 60nmol/min/mg as per activity protocol

 Tel: 1-631-559-9269 1-516-512-3133

 Email: info@creative-biomart.com  Fax: 1-631-938-8127

 45-1 Ramsey Road, Shirley, NY 11967, USA