

Recombinant Human CDK20 Protein, GST-tagged

Cat. No. CDK20-5149H Lot. No. (See product label)

SPECIFICATION

Product Overview	Human CCRK full-length ORF (AAH02655, 1 a.a. - 275 a.a.) recombinant protein with GST-tag at N-terminal.
Species	Human
Source	Wheat Germ
Description	The protein encoded by this gene contains a kinase domain most closely related to the cyclin-dependent protein kinases. The encoded kinase may activate cyclin-dependent kinase 2 and is involved in cell growth. Alternatively spliced transcript variants encoding distinct isoforms have been reported. [provided by RefSeq, Dec 2009]
Molecular Mass	55.99 kDa
AA Sequence	MDQYCILGRIGEGAHGIVFKAKHVETGEIVALKKVALRRLEDGFNPQALREIKALQEM EDNQYVVQLKAVFPHGGSFVLAFFMLSDLAEVVVRHAQRPLAQAQVKSQYLQMLLK GVAFCHANNIVHRDLKPANLLISASGQLKIADFGRLARVFSRSPDGSRLYTHQVATRSVG CIMGELLNGSPLFPGKNDIEQLCYVLRILGTPNPQVWPELTELDPDYNKISFKEQVMPMP LEEVLPDVSPQALDLLGQFLLYPPHQRIAASKLPCLPIHLSCRFLSV
Applications	Enzyme-linked Immunoabsorbent Assay Western Blot (Recombinant protein) Antibody Production Protein Array

 Tel: 1-631-559-9269 1-516-512-3133

 Email: info@creative-biomart.com  Fax: 1-631-938-8127

 45-1 Ramsey Road, Shirley, NY 11967, USA

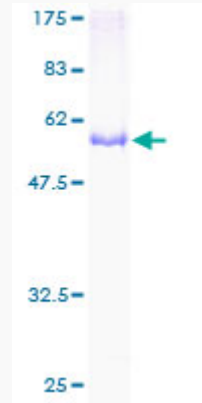
Notes	Best use within three months from the date of receipt of this protein.
Storage	Store at -80 centigrade. Aliquot to avoid repeated freezing and thawing.
Storage Buffer	50 mM Tris-HCl, 10 mM reduced Glutathione, pH=8.0 in the elution buffer.
GENE INFORMATION	
Gene Name	CDK20 cyclin dependent kinase 20 [Homo sapiens (human)]
Official Symbol	CDK20
Synonyms	CCRK; CDK20; cyclin dependent kinase 20; P42; CCRK; CDCH; PNQALRE; cyclin-dependent kinase 20; CAK-kinase p42; CDK-activating kinase p42; cell cycle-related kinase; cell division protein kinase 20; cyclin-dependent protein kinase H; cyclin-kinase-activating kinase p42; EC 2.7.11.22
Gene ID	23552
mRNA Refseq	NM_001039803
Protein Refseq	NP_001034892
MIM	610076
UniProt ID	Q8IZL9

 Tel: 1-631-559-9269 1-516-512-3133

 Email: info@creative-biomart.com  Fax: 1-631-938-8127

 45-1 Ramsey Road, Shirley, NY 11967, USA

**Quality Control
Testing**



12.5% SDS-PAGE Stained with Coomassie Blue.

 Tel: 1-631-559-9269 1-516-512-3133

 Email: info@creative-biomart.com  Fax: 1-631-938-8127

 45-1 Ramsey Road, Shirley, NY 11967, USA