

Recombinant Human CDK2AP1 Protein, GST-Tagged

Cat. No. CDK2AP1-1005H **Lot. No.** (See product label)

SPECIFICATION

Product Overview	Human CDK2AP1 full-length ORF (AAH34717, 1 a.a. - 115 a.a.) recombinant protein with GST-tag at N-terminal.
Species	Human
Source	Wheat Germ
Description	The protein encoded by this gene is a cyclin-dependent kinase 2 (CDK2) -associated protein which is thought to negatively regulate CDK2 activity by sequestering monomeric CDK2, and targeting CDK2 for proteolysis. This protein was found to also interact with DNA polymerase alpha/primase and mediate the phosphorylation of the large p180 subunit, which suggests a regulatory role in DNA replication during the S-phase of the cell cycle. This protein also forms a core subunit of the nucleosome remodeling and histone deacetylation (NURD) complex that epigenetically regulates embryonic stem cell differentiation. This gene thus plays a role in both cell-cycle and epigenetic regulation. Alternative splicing results in multiple transcript variants encoding distinct isoforms. [provided by RefSeq, Jul 2012]
Molecular Mass	38.39 kDa
AA Sequence	MSYKPNLAAHMPAAALNAAGSVHSPSTSMATSSQYRQLLSDYGPPSLGYTQGTGN SQVPQSKYAELLAIEELGKEIRPTYAGSKSAMERLKRGIHARGLVRECLAETERNAR S
Applications	Enzyme-linked Immunoabsorbent Assay

 Tel: 1-631-559-9269 1-516-512-3133

 Email: info@creative-biomart.com  Fax: 1-631-938-8127

 45-1 Ramsey Road, Shirley, NY 11967, USA

Western Blot (Recombinant protein)
 Antibody Production
 Protein Array

Storage Store at -80 centigrade. Aliquot to avoid repeated freezing and thawing.

Storage Buffer 50 mM Tris-HCl, 10 mM reduced Glutathione, pH=8.0 in the elution buffer.

GENE INFORMATION

Gene Name [CDK2AP1 cyclin-dependent kinase 2 associated protein 1 \[Homo sapiens \]](#)

Official Symbol [CDK2AP1](#)

Synonyms CDK2AP1; cyclin-dependent kinase 2 associated protein 1; CDK2 associated protein 1; cyclin-dependent kinase 2-associated protein 1; doc 1; DOC1; DORC1; p12DOC 1; ST19; Deleted in oral cancer-1; deleted in oral cancer 1; CDK2-associated protein 1; putative oral cancer suppressor; doc-1; p12DOC-1;

Gene ID [8099](#)

mRNA Refseq [NM_004642](#)

Protein Refseq [NP_004633](#)

MIM [602198](#)

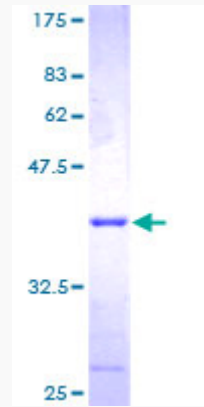
UniProt ID [O14519](#)

 Tel: 1-631-559-9269 1-516-512-3133

 Email: info@creative-biomart.com  Fax: 1-631-938-8127

 45-1 Ramsey Road, Shirley, NY 11967, USA

**Quality Control
Testing**



12.5% SDS-PAGE Stained with Coomassie Blue.

 Tel: 1-631-559-9269 1-516-512-3133

 Email: info@creative-biomart.com  Fax: 1-631-938-8127

 45-1 Ramsey Road, Shirley, NY 11967, USA