

Recombinant Human CDK2AP1 protein, GST-tagged

Cat. No. CDK2AP1-11047H **Lot. No.** (See product label)

SPECIFICATION

Product Overview	Recombinant Human CDK2AP1 protein(1-115 aa), fused with N-terminal GST tag, was expressed in E.coli.
Species	Human
Source	E.coli
ProteinLength	1-115 aa
Form	The purified protein was lyophilized from sterile phosphate-buffered saline (PBS: 58 mM Na ₂ HPO ₄ , 17 mM NaH ₂ PO ₄ , 68 mM NaCl, pH 8.0). Prior to lyophilization, 5% (w/v) trehalose and 5% (w/v) mannitol were incorporated as cryoprotective excipients. The protein was eluted with a buffer containing 100 mM reduced glutathione (GSH).
AASequence	MSYKPNLAAHMPAAALNAAGSVHSPSTSMATSSQYRQLLSYDYGPPSLGYTQGTGN SQVPQSKYAELLAIIIEELGKEIRPTYAGSKSAMERLKRGIHARGLVRECLAETERNAR S
Purity	90%, by SDS-PAGE with Coomassie Brilliant Blue staining.
Storage	Store at 2-8°C for 1-2 weeks. Aliquot and store at -20°C to -80°C for up to 3 months, reconstitution with sterile water and addition of an equal volume of glycerol. Avoid repeat freeze-thaw cycles.

 Tel: 1-631-559-9269 1-516-512-3133

 Email: info@creative-biomart.com  Fax: 1-631-938-8127

 45-1 Ramsey Road, Shirley, NY 11967, USA

Reconstitution

Dissolve the product in 200 µl sterile water to achieve a working concentration of 0.25 g/µl. If experimental compatibility allows, mix the aqueous solution with an equal volume of glycerol (1:1 ratio) after initial reconstitution.

GENE INFORMATION

Gene Name CDK2AP1 cyclin-dependent kinase 2 associated protein 1 [Homo sapiens]

Official Symbol CDK2AP1

Synonyms

CDK2AP1; cyclin-dependent kinase 2 associated protein 1; CDK2 associated protein 1; cyclin-dependent kinase 2-associated protein 1; doc 1; DOC1; DORC1; p12DOC 1; ST19; Deleted in oral cancer-1; deleted in oral cancer 1; CDK2-associated protein 1; putative oral cancer suppressor; doc-1; p12DOC-1;

Gene ID 8099

mRNA Refseq NM_004642

Protein Refseq NP_004633

MIM 602198

UniProt ID O14519

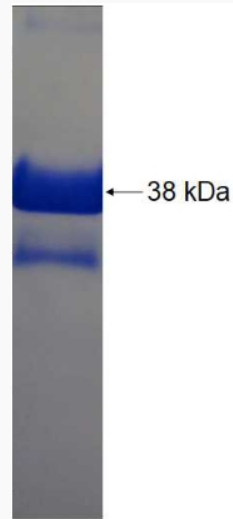
 Tel: 1-631-559-9269 1-516-512-3133

 Email: info@creative-biomart.com  Fax: 1-631-938-8127

 45-1 Ramsey Road, Shirley, NY 11967, USA



SDS-PAGE



Tel: 1-631-559-9269 1-516-512-3133

Email: info@creative-biomart.com Fax: 1-631-938-8127

45-1 Ramsey Road, Shirley, NY 11967, USA