

# Recombinant Human CDK2AP2 Protein, Myc/DDK-tagged, C13 and N15-labeled

**Cat. No.** CDK2AP2-3354H    **Lot. No.** (See product label)

## SPECIFICATION

<b>Product Overview</b>	CDK2AP2 MS Standard C13 and N15-labeled recombinant protein (NP_005842) with a C-terminal MYC/DDK tag, was expressed in HEK293 cells.
<b>Species</b>	Human
<b>Source</b>	HEK293
<b>Description</b>	This gene encodes a protein that interacts with cyclin-dependent kinase 2 associated protein 1. Pseudogenes associated with this gene are located on chromosomes 7 and 9. Alternatively spliced transcript variants have been observed for this gene.
<b>Molecular Mass</b>	13.1 kDa
<b>AA Sequence</b>	MSYKPIAPAPSSTPGSSTPGPGTPVPTGSPSPSGSVPGAGAPFRPLFNDFGPPSM GYVQAMKPPGAQGSQSTYTDLLSVIEEMGKEIRPTYAGSKSAMERLKRGIHARALV RECLAETERNARTTRTRPLEQKLISEEDLAANDILDYKDDDDKV
<b>Purity</b>	> 80% as determined by SDS-PAGE and Coomassie blue staining
<b>Stability</b>	Stable for 3 months from receipt of products under proper storage and handling conditions.
<b>Storage</b>	Store at -80 centigrade. Avoid repeated freeze-thaw cycles.

 Tel: 1-631-559-9269    1-516-512-3133

 Email: [info@creative-biomart.com](mailto:info@creative-biomart.com)     Fax: 1-631-938-8127

 45-1 Ramsey Road, Shirley, NY 11967, USA

**Concentration** 50 µg/mL as determined by BCA

**Storage Buffer** 100 mM glycine, 25 mM Tris-HCl, pH 7.3.

## GENE INFORMATION

**Gene Name** CDK2AP2 cyclin-dependent kinase 2 associated protein 2 [ Homo sapiens (human) ]

**Official Symbol** CDK2AP2

**Synonyms** CDK2AP2; cyclin-dependent kinase 2 associated protein 2; CDK2 associated protein 2; cyclin-dependent kinase 2-associated protein 2; DOC 1R; p14; tumor suppressor deleted in oral cancer related 1; DOC-1-related protein; CDK2-associated protein 2; tumor suppressor deleted in oral cancer-related 1; DOC-1R; FLJ10636;

**Gene ID** 10263

**mRNA Refseq** NM\_005851

**Protein Refseq** NP\_005842

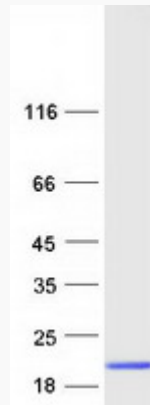
**UniProt ID** O75956

 Tel: 1-631-559-9269 1-516-512-3133

 Email: [info@creative-biomart.com](mailto:info@creative-biomart.com)  Fax: 1-631-938-8127

 45-1 Ramsey Road, Shirley, NY 11967, USA

**SDS-PAGE**



 Tel: 1-631-559-9269 1-516-512-3133

 Email: [info@creative-biomart.com](mailto:info@creative-biomart.com)  Fax: 1-631-938-8127

 45-1 Ramsey Road, Shirley, NY 11967, USA