

## Recombinant Human CDK2AP2 protein, His-tagged

Cat. No. CDK2AP2-467H Lot. No. (See product label)

### SPECIFICATION

<b>Product Overview</b>	Recombinant Human CDK2AP2 protein(1-126 aa), fused with N-terminal His tag, was expressed in E.coli.
<b>Species</b>	Human
<b>Source</b>	E.coli
<b>ProteinLength</b>	1-126 aa
<b>Form</b>	The purified protein was Lyophilized from sterile PBS (58mM Na <sub>2</sub> HPO <sub>4</sub> , 17mM NaH <sub>2</sub> PO <sub>4</sub> , 68mM NaCl, pH7.4). 5 % trehalose and 5 % mannitol are added as protectant before lyophilization. The elution buffer contain 300mM imidazole.
<b>AASequence</b>	MSYKPIAPAPSSTPGSSTPGPGTVPVTGSPSPSGSVPGAGAPFRPLFNDFGPPSM GYVQAMKPPGAQGSQSTYTDLLSVIEEMGKEIRPTYAGSKSAMERLKRGIHARALV RECLAETERNART
<b>Purity</b>	90%, by SDS-PAGE with Coomassie Brilliant Blue staining.
<b>Storage</b>	Store at 2-8°C for 1-2 weeks. Aliquot and store at -20°C to -80°C for up to 3 months, reconstitution with sterile water and addition of an equal volume of glycerol. Avoid repeat freeze-thaw cycles.
<b>Reconstitution</b>	Dissolve the product in 200 µl sterile water to achieve a working concentration of 0.25 g/µl. If experimental compatibility allows, mix the aqueous solution with an equal

 Tel: 1-631-559-9269 1-516-512-3133

 Email: [info@creative-biomart.com](mailto:info@creative-biomart.com)  Fax: 1-631-938-8127

 45-1 Ramsey Road, Shirley, NY 11967, USA

volume of glycerol (1:1 ratio) after initial reconstitution.

## GENE INFORMATION

<b>Gene Name</b>	CDK2AP2 cyclin-dependent kinase 2 associated protein 2 [ Homo sapiens ]
<b>Official Symbol</b>	CDK2AP2
<b>Synonyms</b>	CDK2AP2; cyclin-dependent kinase 2 associated protein 2; CDK2 associated protein 2; cyclin-dependent kinase 2-associated protein 2; DOC 1R; p14; tumor suppressor deleted in oral cancer related 1; DOC-1-related protein; CDK2-associated protein 2; tumor suppressor deleted in oral cancer-related 1; DOC-1R; FLJ10636;
<b>Gene ID</b>	10263
<b>mRNA Refseq</b>	NM_005851
<b>Protein Refseq</b>	NP_005842
<b>UniProt ID</b>	O75956

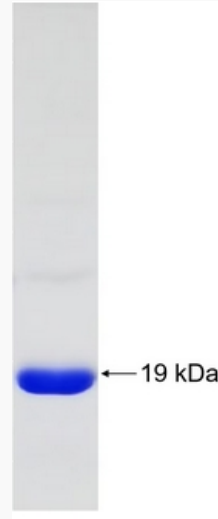
 Tel: 1-631-559-9269 1-516-512-3133

 Email: [info@creative-biomart.com](mailto:info@creative-biomart.com)  Fax: 1-631-938-8127

 45-1 Ramsey Road, Shirley, NY 11967, USA



SDS-PAGE



Tel: 1-631-559-9269 1-516-512-3133

Email: [info@creative-biomart.com](mailto:info@creative-biomart.com) Fax: 1-631-938-8127

45-1 Ramsey Road, Shirley, NY 11967, USA