

## Recombinant Human CDK3 Protein, GST-Tagged

Cat. No. CDK3-1007H Lot. No. (See product label)

### SPECIFICATION

<b>Product Overview</b>	Human CDK3 full-length ORF (NP_001249.1, 1 a.a. - 305 a.a.) recombinant protein with GST-tag at N-terminal.
<b>Species</b>	Human
<b>Source</b>	Wheat Germ
<b>Description</b>	This gene encodes a member of the cyclin-dependent protein kinase family. The protein promotes entry into S phase, in part by activating members of the E2F family of transcription factors. The protein also associates with cyclin C and phosphorylates the retinoblastoma 1 protein to promote exit from G0. [provided by RefSeq, Jul 2008]
<b>Molecular Mass</b>	61.4 kDa
<b>AA Sequence</b>	MDMFQKVEKIGEGTYGVVYKAKNRETGQLVALKKIRLDLEMEGVPSTAIREISLLKEL KHPNIVRLLDVVHNERKLYLVFEFLSQDLKKYMDSTPGSELPLHLIKSYLFQLQGV FCHSHRVIHRDLKPQNLLINELGAIKLADFGGLARAFGVPLRITYTHEVVTWYRAPEILL GSKFYTTAVDIWSIGCIFAEMVTRKALFPGDSEIDQLFRIFRMLGTPSEDTWPGVTQL PDYKGSFPKWTRKGLLEEIVPNLEPEGRDLLMQLLQYDPSQRITAKTALAHYPYFSSPE PSPAARQYVLQRFH
<b>Applications</b>	Enzyme-linked Immunoabsorbent Assay Western Blot (Recombinant protein) Antibody Production Protein Array

 Tel: 1-631-559-9269 1-516-512-3133

 Email: [info@creative-biomart.com](mailto:info@creative-biomart.com)  Fax: 1-631-938-8127

 45-1 Ramsey Road, Shirley, NY 11967, USA

**Storage** Store at -80 centigrade. Aliquot to avoid repeated freezing and thawing.

**Storage Buffer** 50 mM Tris-HCl, 10 mM reduced Glutathione, pH=8.0 in the elution buffer.

## GENE INFORMATION

**Gene Name** CDK3 cyclin-dependent kinase 3 [ Homo sapiens ]

**Official Symbol** CDK3

**Synonyms** CDK3; cyclin-dependent kinase 3; cell division protein kinase 3;

**Gene ID** 1018

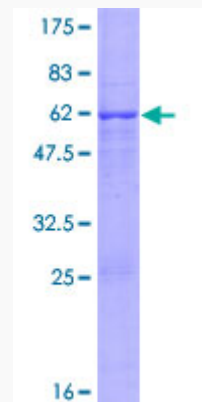
**mRNA Refseq** NM\_001258

**Protein Refseq** NP\_001249

**MIM** 123828

**UniProt ID** Q00526

**Quality Control Testing**



 Tel: 1-631-559-9269 1-516-512-3133

 Email: [info@creative-biomart.com](mailto:info@creative-biomart.com)  Fax: 1-631-938-8127

 45-1 Ramsey Road, Shirley, NY 11967, USA



12.5% SDS-PAGE Stained with Coomassie Blue.

 Tel: 1-631-559-9269 1-516-512-3133

 Email: [info@creative-biomart.com](mailto:info@creative-biomart.com)  Fax: 1-631-938-8127

 45-1 Ramsey Road, Shirley, NY 11967, USA