

## Active Recombinant Human CDK3/CCNE2 protein, GST-tagged

Cat. No. CDK3-CCNE2-312H Lot. No. (See product label)

### SPECIFICATION

<b>Product Overview</b>	Recombinant full-length human CDK3 and CCNE2 were co-expressed by baculovirus in Sf9 insect cells using an N-terminal GST tag on both proteins.
<b>Species</b>	Human
<b>Source</b>	Insect Cells
<b>Description</b>	CDK3/CyclinE is a member of the cyclin-dependent protein kinase family and promotes entry into S phase, in part by activating members of the E2F family of transcription factors. CDK3 can also associate with cyclin C and phosphorylates the retinoblastoma 1 protein to promote exit from G0. The CDK3 gene has been mapped to chromosomal location of 17q22-qter, telomeric to the BRCA1 gene by somatic cell hybrids analysis. The presence of a single point mutation in the CDK3 gene from several Mus musculus strains commonly used in the laboratory has been reported.
<b>Form</b>	50mM Tris-HCl, pH 7.5, 150mM NaCl, 10mM glutathione, 0.1mM EDTA, 0.25mM DTT, 0.1mM PMSF, 25% glycerol
<b>Bio-activity</b>	The specific activity of CDK3/CyclinE2 was determined to be 80nmol/min/mg as per activity protocol.
<b>Molecular Mass</b>	CDK3 ~60 kDa and CCNE2 ~72 kDa
<b>Purity</b>	The purity of CDK3/CCNE2 was determined to be >95% by densitometry.

 Tel: 1-631-559-9269 1-516-512-3133

 Email: [info@creative-biomart.com](mailto:info@creative-biomart.com)  Fax: 1-631-938-8127

 45-1 Ramsey Road, Shirley, NY 11967, USA

<b>Applications</b>	Kinase Assay; WB
<b>Stability</b>	1 year at -70 centigrade
<b>Storage</b>	Store product at -70 centigrade. For optimal storage, aliquot target into smaller quantities after centrifugation and store at recommended temperature. For most favorable performance, avoid repeated handling and multiple freeze/thaw cycles.
<b>Concentration</b>	0.1 µg/µL

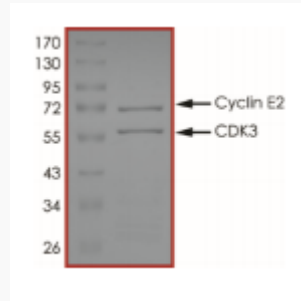
## GENE INFORMATION

<b>Gene Name</b>	cyclin dependent kinase 3 [ Homo sapiens (human) ]; cyclin E2 [ Homo sapiens (human) ]
<b>Official Symbol</b>	CDK3; CCNE2
<b>Synonyms</b>	CDK3; CCNE2; CYCE2
<b>Gene ID</b>	1018; 9134
<b>mRNA Refseq</b>	NM_001258; NM_057749
<b>Protein Refseq</b>	NP_001249; NP_001228
<b>MIM</b>	123828; 603775
<b>UniProt ID</b>	Q00526; P24864

 Tel: 1-631-559-9269 1-516-512-3133

 Email: [info@creative-biomart.com](mailto:info@creative-biomart.com)  Fax: 1-631-938-8127

 45-1 Ramsey Road, Shirley, NY 11967, USA



The specific activity of CDK3/CyclinE2 was determined to be 80nmol/min/mg as per activity protocol

Tel: 1-631-559-9269 1-516-512-3133

Email: [info@creative-biomart.com](mailto:info@creative-biomart.com) Fax: 1-631-938-8127

45-1 Ramsey Road, Shirley, NY 11967, USA