

Active Recombinant Human CDK4 Protein, His-Tagged

Cat. No. CDK4-1016H Lot. No. (See product label)

SPECIFICATION

Product Overview	Human CDK4 (NM_000075, 4 a.a. - 303 a.a.) and CCND3 (NM_001760, 1 a.a. - 292 a.a.) recombinant protein with His His tag expressed in Sf9 cells.
Species	Human
Source	Insect Cells
ProteinLength	4-303;1-292 a.a.
Description	<p>The protein encoded by this gene is a member of the Ser/Thr protein kinase family. This protein is highly similar to the gene products of <i>S. cerevisiae</i> <i>cdc28</i> and <i>S. pombe</i> <i>cdc2</i>. It is a catalytic subunit of the protein kinase complex that is important for cell cycle G1 phase progression. The activity of this kinase is restricted to the G1-S phase, which is controlled by the regulatory subunits D-type cyclins and CDK inhibitor p16(INK4a). This kinase was shown to be responsible for the phosphorylation of retinoblastoma gene product (Rb). Mutations in this gene as well as in its related proteins including D-type cyclins, p16(INK4a) and Rb were all found to be associated with tumorigenesis of a variety of cancers. Multiple polyadenylation sites of this gene have been reported. [provided by RefSeq, Jul 2008]</p>
Form	Liquid
Bio-activity	75 pmol/μg x min
Molecular Mass	CDK4: 59.700, CCND3 kDa

 Tel: 1-631-559-9269 1-516-512-3133

 Email: info@creative-biomart.com  Fax: 1-631-938-8127

 45-1 Ramsey Road, Shirley, NY 11967, USA

Applications	Functional Study SDS-PAGE
Storage	Store at -80 centigrade. Aliquot to avoid repeated freezing and thawing
Concentration	0.337 µg/µL
Storage Buffer	In 50 mM Tris-HCl, 100 mM NaCl, pH 8.0. (5 mM DTT, 4 mM reduced glutathione, 20% glycerol)

GENE INFORMATION

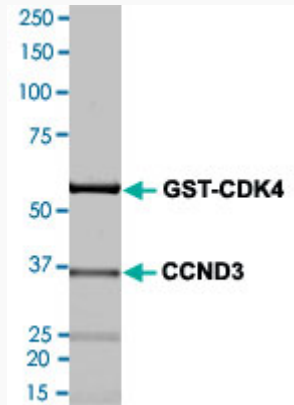
Gene Name	CDK4 cyclin-dependent kinase 4 [Homo sapiens]
Official Symbol	CDK4
Synonyms	CDK4; cyclin-dependent kinase 4; PSK J3; cell division protein kinase 4; CMM3; PSK-J3; MGC14458;
Gene ID	1019
mRNA Refseq	NM_000075
Protein Refseq	NP_000066
MIM	123829
UniProt ID	P11802

 Tel: 1-631-559-9269 1-516-512-3133

 Email: info@creative-biomart.com  Fax: 1-631-938-8127

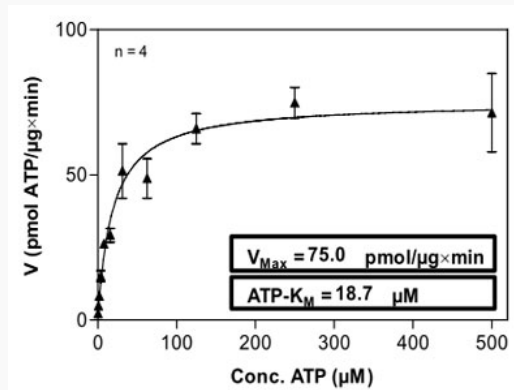
 45-1 Ramsey Road, Shirley, NY 11967, USA

Quality Control
Testing



2 µg/lane SDS-PAGE Stained with Coomassie Blue

Result of activity
analysis



Tel: 1-631-559-9269 1-516-512-3133

Email: info@creative-biomart.com Fax: 1-631-938-8127

45-1 Ramsey Road, Shirley, NY 11967, USA