

# Recombinant Full Length Human CDK4 Protein, C-Flag-tagged

Cat. No. CDK4-927HFL    Lot. No. (See product label)

## SPECIFICATION

<b>Product Overview</b>	Recombinant Full Length Human CDK4 Protein, fused to Flag-tag at C-terminus, was expressed in Mammalian cells.
<b>Species</b>	Human
<b>Source</b>	Mammalian Cells
<b>Description</b>	<p>The protein encoded by this gene is a member of the Ser/Thr protein kinase family. This protein is highly similar to the gene products of <i>S. cerevisiae</i> cdc28 and <i>S. pombe</i> cdc2. It is a catalytic subunit of the protein kinase complex that is important for cell cycle G1 phase progression. The activity of this kinase is restricted to the G1-S phase, which is controlled by the regulatory subunits D-type cyclins and CDK inhibitor p16(INK4a). This kinase was shown to be responsible for the phosphorylation of retinoblastoma gene product (Rb). Mutations in this gene as well as in its related proteins including D-type cyclins, p16(INK4a) and Rb were all found to be associated with tumorigenesis of a variety of cancers. Multiple polyadenylation sites of this gene have been reported.</p>
<b>Form</b>	25 mM Tris HCl, pH 7.3, 100 mM glycine, 10% glycerol.
<b>Molecular Mass</b>	33.5 kDa
<b>AA Sequence</b>	<p>MATSRYPVAEIGVGAYGTVYKARDPHSGHFVALKSVRVPNGGGGGGGLPISTVRE  VALLRRLEAFEHPN VVRLMDVCATSRTDREIKVTLVFEHVDQDLRTYLDKAPPPGLP  AETIKDLMRQFLRGLDFLHANCIVHRD LKPENILVTSGGTVKLADFGGLARIYSYQMAL</p>

 Tel: 1-631-559-9269    1-516-512-3133

 Email: [info@creative-biomart.com](mailto:info@creative-biomart.com)     Fax: 1-631-938-8127

 45-1 Ramsey Road, Shirley, NY 11967, USA

TPVVVTLWYRAPEVLLQSTYATPVDMWSVGCIFAEMFRR KPLFCGNSEADQLGKIF  
 DLIGLPPEDDWPRDVS LPRGAFPPRGPRPVQSVVPEMEESGAQLLLEMLTFNP  
 HKRISAFRALQHSYLHKDEGNPETRTRPLEQKLISEEDLAANDILDYKDDDDKV

**Purity** > 80% as determined by SDS-PAGE and Coomassie blue staining.

**Stability** Stable for 12 months from the date of receipt of the product under proper storage and handling conditions. Avoid repeated freeze-thaw cycles.

**Storage** Store at -80 centigrade.

**Concentration** >50 ug/mL as determined by microplate BCA method.

**Preparation** Recombinant protein was captured through anti-DDK affinity column followed by conventional chromatography steps.

**Protein Families** Druggable Genome, Protein Kinase

**Protein Pathways** Bladder cancer, Cell cycle, Chronic myeloid leukemia, Glioma, Melanoma, Non-small cell lung cancer, p53 signaling pathway, Pancreatic cancer, Pathways in cancer, Small cell lung cancer, T cell receptor signaling pathway, Tight junction

**Full Length** Full L.

## GENE INFORMATION

**Gene Name** CDK4 cyclin dependent kinase 4 [ Homo sapiens (human) ]

**Official Symbol** CDK4

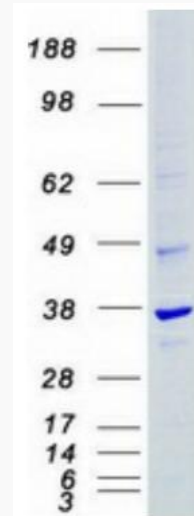
**Synonyms** CMM3; PSK-J3

 Tel: 1-631-559-9269 1-516-512-3133

 Email: [info@creative-biomart.com](mailto:info@creative-biomart.com)  Fax: 1-631-938-8127

 45-1 Ramsey Road, Shirley, NY 11967, USA

<b>Gene ID</b>	1019
<b>mRNA Refseq</b>	NM_000075.4
<b>Protein Refseq</b>	NP_000066.1
<b>MIM</b>	123829
<b>UniProt ID</b>	P11802



Coomassie blue staining of purified CDK4 protein.

 Tel: 1-631-559-9269 1-516-512-3133

 Email: [info@creative-biomart.com](mailto:info@creative-biomart.com)  Fax: 1-631-938-8127

 45-1 Ramsey Road, Shirley, NY 11967, USA