

Recombinant Human CDK5 Protein, GST-Tagged

Cat. No. CDK5-1018H Lot. No. (See product label)

SPECIFICATION

Product Overview	Human CDK5 full-length ORF (NP_004926.1, 1 a.a. - 292 a.a.) recombinant protein with GST-tag at N-terminal.
Species	Human
Source	Wheat Germ
Description	<p>This gene encodes a proline-directed serine/threonine kinase that is a member of the cyclin-dependent kinase family of proteins. Unlike other members of the family, the protein encoded by this gene does not directly control cell cycle regulation. Instead the protein, which is predominantly expressed at high levels in mammalian postmitotic central nervous system neurons, functions in diverse processes such as synaptic plasticity and neuronal migration through phosphorylation of proteins required for cytoskeletal organization, endocytosis and exocytosis, and apoptosis. In humans, an allelic variant of the gene that results in undetectable levels of the protein has been associated with lethal autosomal recessive lissencephaly-7. Alternative splicing results in multiple transcript variants. [provided by RefSeq, May 2015]</p>
Molecular Mass	57.75 kDa
AA Sequence	<p>MQKYEKLEKIGEGTYGTVFKAKNRETHEIVALKRVRLLDDDDDEGVPSSALREICLLKEL KHKNIVRLHDVLHSDKKLTLVFEFCDQDLKKYFDSCNGDLDP EIVKSFLFQLLKGLGF CHSRNVLHRDLKPQNLLINRNGELKLADFG LARAFGIPVRCYSAEVVTLWYRPPDVL FGAKLYSTSIDMWSAGCIFAELANAGRPLFPGNDVDDQLKRIFRLLGTPTEEQWPSM</p>

 Tel: 1-631-559-9269 1-516-512-3133

 Email: info@creative-biomart.com  Fax: 1-631-938-8127

 45-1 Ramsey Road, Shirley, NY 11967, USA

TKLPDYKPYPMYPATTSLVNVVVKLNATGRDLLQNLLKCNPVQRISAEELQHPYFS
DFCPP

Applications
Enzyme-linked Immunoabsorbent Assay
Western Blot (Recombinant protein)
Antibody Production
Protein Array

Storage Store at -80 centigrade. Aliquot to avoid repeated freezing and thawing.

Storage Buffer 50 mM Tris-HCl, 10 mM reduced Glutathione, pH=8.0 in the elution buffer.

GENE INFORMATION

Gene Name [CDK5 cyclin-dependent kinase 5 \[Homo sapiens \]](#)

Official Symbol [CDK5](#)

Synonyms CDK5; cyclin-dependent kinase 5; PSSALRE; TPKII catalytic subunit; protein kinase CDK5 splicing; cell division protein kinase 5; serine/threonine-protein kinase PSSALRE; tau protein kinase II catalytic subunit;

Gene ID [1020](#)

mRNA Refseq [NM_001164410](#)

Protein Refseq [NP_001157882](#)

MIM [123831](#)

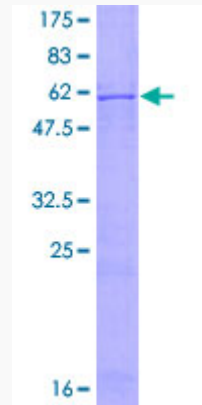
UniProt ID [Q00535](#)

 Tel: 1-631-559-9269 1-516-512-3133

 Email: info@creative-biomart.com  Fax: 1-631-938-8127

 45-1 Ramsey Road, Shirley, NY 11967, USA

**Quality Control
Testing**



12.5% SDS-PAGE Stained with Coomassie Blue.

 Tel: 1-631-559-9269 1-516-512-3133

 Email: info@creative-biomart.com  Fax: 1-631-938-8127

 45-1 Ramsey Road, Shirley, NY 11967, USA