

Active Recombinant Human CDK5 Protein, GST-Tagged

Cat. No. CDK5-1021H Lot. No. (See product label)

SPECIFICATION

Product Overview	Human CDK5 (NP_004926.1, 1 a.a. - 292 a.a.) full-length recombinant protein with GST tag co-expressed with CDK5R1 (NP_003876.1, 99 a.a. a.a. - 307 a.a.) expressed in Baculovirus infected Sf21 cells.
Species	Human
Source	Insect Cells
Description	This gene encodes a proline-directed serine/threonine kinase that is a member of the cyclin-dependent kinase family of proteins. Unlike other members of the family, the protein encoded by this gene does not directly control cell cycle regulation. Instead the protein, which is predominantly expressed at high levels in mammalian postmitotic central nervous system neurons, functions in diverse processes such as synaptic plasticity and neuronal migration through phosphorylation of proteins required for cytoskeletal organization, endocytosis and exocytosis, and apoptosis. In humans, an allelic variant of the gene that results in undetectable levels of the protein has been associated with lethal autosomal recessive lissencephaly-7. Alternative splicing results in multiple transcript variants. [provided by RefSeq, May 2015]
Form	Liquid
Bio-activity	The activity was measured by off-chip mobility shift assay. The enzyme was incubated with fluorescence-labeled substrate and Mg (or Mn)/ATP. The phosphorylated and unphosphorylated substrates were separated and detected by

 Tel: 1-631-559-9269 1-516-512-3133

 Email: info@creative-biomart.com  Fax: 1-631-938-8127

 45-1 Ramsey Road, Shirley, NY 11967, USA

	LabChip 3000. Substrate: Modified Histone H1. ATP: 100 µM.
Molecular Mass	60 kDa
Purity	99 % by SDS-PAGE/CBB staining
Applications	Functional Study SDS-PAGE
Storage	Store at -80 centigrade. Aliquot to avoid repeated freezing and thawing.
Storage Buffer	In 50 mM Tris-HCl, 150 mM NaCl, pH 7.5 (0.05% Brij35, 1 mM DTT, 10% glycerol)

GENE INFORMATION

Gene Name	CDK5 cyclin-dependent kinase 5 [Homo sapiens]
Official Symbol	CDK5
Synonyms	CDK5; cyclin-dependent kinase 5; PSSALRE; TPKII catalytic subunit; protein kinase CDK5 splicing; cell division protein kinase 5; serine/threonine-protein kinase PSSALRE; tau protein kinase II catalytic subunit;
Gene ID	1020
mRNA Refseq	NM_001164410
Protein Refseq	NP_001157882
MIM	123831

 Tel: 1-631-559-9269 1-516-512-3133

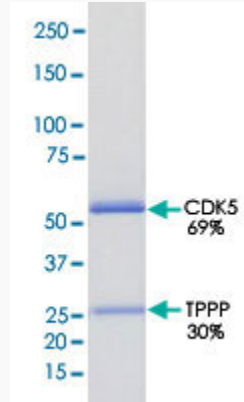
 Email: info@creative-biomart.com  Fax: 1-631-938-8127

 45-1 Ramsey Road, Shirley, NY 11967, USA

UniProt ID

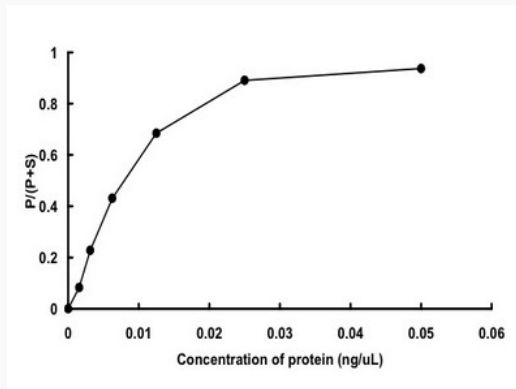
Q00535

Quality Control
Testing



Loading 1 μ g protein in SDS-PAGE

Result of activity
analysis



 Tel: 1-631-559-9269 1-516-512-3133

 Email: info@creative-biomart.com  Fax: 1-631-938-8127

 45-1 Ramsey Road, Shirley, NY 11967, USA