

# Recombinant Full Length Human CDK5 Protein, C-Flag-tagged

Cat. No. CDK5-1168HFL Lot. No. (See product label)

## SPECIFICATION

<b>Product Overview</b>	Recombinant Full Length Human CDK5 Protein, fused to Flag-tag at C-terminus, was expressed in Mammalian cells.
<b>Species</b>	Human
<b>Source</b>	Mammalian Cells
<b>Description</b>	This gene encodes a proline-directed serine/threonine kinase that is a member of the cyclin-dependent kinase family of proteins. Unlike other members of the family, the protein encoded by this gene does not directly control cell cycle regulation. Instead the protein, which is predominantly expressed at high levels in mammalian postmitotic central nervous system neurons, functions in diverse processes such as synaptic plasticity and neuronal migration through phosphorylation of proteins required for cytoskeletal organization, endocytosis and exocytosis, and apoptosis. In humans, an allelic variant of the gene that results in undetectable levels of the protein has been associated with lethal autosomal recessive lissencephaly-7. Alternative splicing results in multiple transcript variants.
<b>Form</b>	25 mM Tris HCl, pH 7.3, 100 mM glycine, 10% glycerol.
<b>Molecular Mass</b>	33.1 kDa
<b>AA Sequence</b>	MQKYEKLEKIGEGTYGTVFKAKNRETHEIVALKRVRLLDDDDDEGVPSSALREICLLKEL KHKNIVRLHDVL HSDKKLTLVFEFCDQDLKKYFDSCNGDLDP EIVKSFLFQLLKGLG FCHSRNVLHRDLKPQNLLINRNGEL KLADFGLARAFGIPVRCYSAEVVTLWYRPPD

 Tel: 1-631-559-9269 1-516-512-3133

 Email: [info@creative-biomart.com](mailto:info@creative-biomart.com)  Fax: 1-631-938-8127

 45-1 Ramsey Road, Shirley, NY 11967, USA

VLFGAKLYSTSIDMWSAGCIFAELANAGRPLFPGNDVDD QLKRFRLLGTPTEEQWP  
 SMTKLPDYKPYMPYPATTSLVNVVPKLNATGRDLLQNLKCNPVQRISAEAA  
 LQHPYFSDFCPPTRTRPLEQKLISEEDLAANDILDYKDDDDKV

**Purity** > 80% as determined by SDS-PAGE and Coomassie blue staining.

**Stability** Stable for 12 months from the date of receipt of the product under proper storage and handling conditions. Avoid repeated freeze-thaw cycles.

**Storage** Store at -80 centigrade.

**Concentration** >50 ug/mL as determined by microplate BCA method.

**Preparation** Recombinant protein was captured through anti-DDK affinity column followed by conventional chromatography steps.

**Protein Families** Druggable Genome, Protein Kinase

**Protein Pathways** Alzheimer's disease, Axon guidance

**Full Length** Full L.

## GENE INFORMATION

**Gene Name** CDK5 cyclin dependent kinase 5 [ Homo sapiens (human) ]

**Official Symbol** CDK5

**Synonyms** LIS7; PSSALRE

**Gene ID** 1020

 Tel: 1-631-559-9269 1-516-512-3133

 Email: [info@creative-biomart.com](mailto:info@creative-biomart.com)  Fax: 1-631-938-8127

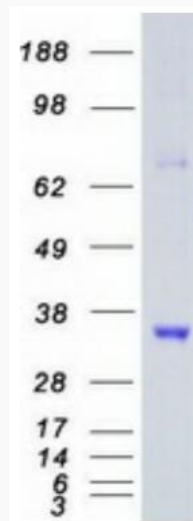
 45-1 Ramsey Road, Shirley, NY 11967, USA

mRNA Refseq [NM\\_004935.4](#)

Protein Refseq [NP\\_004926.1](#)

MIM [123831](#)

UniProt ID [Q00535](#)



Coomassie blue staining of purified CDK5 protein.

 Tel: 1-631-559-9269 1-516-512-3133

 Email: [info@creative-biomart.com](mailto:info@creative-biomart.com)  Fax: 1-631-938-8127

 45-1 Ramsey Road, Shirley, NY 11967, USA