

Recombinant Human CDK5 Protein, His-tagged

Cat. No. CDK5-236H **Lot. No.** (See product label)

SPECIFICATION

Product Overview	Recombinant Human CDK5(1-292aa) fused with His tag at C-terminal was expressed in Insect cells.
Species	Human
Source	Insect Cells
ProteinLength	1-292aa
Description	CDK5, also known as cyclin-dependent-like kinase 5 isoform 1, is a member of the cyclin dependent kinase family of serine/threonine kinases. It is present in numerous mammalian tissues including kidney, testes, and ovary. Its activity is detected almost exclusively in brain extracts. This is activated by association with a neuron-specific activator, p35 or its isoform p39. CDK5 is probably involved in the control of the cell cycle.
Predicted N Terminal	Met1
Form	Liquid. In Phosphate Buffered Saline (pH 7.4) containing 10% glycerol.
Molecular Mass	34.1kDa (298aa) 28-40KDa (SDS-PAGE under reducing conditions.)
AA Sequence	MQKYEKLEKI GEGTYGTVFK AKNRETHEIV ALKRVRLDDD DEGVPSALR EICLLKELKH KNIVRLHDVL HSDKKLTLVF EFCDQDLKKY FDSCNGDLDP EIVKSFLFQL LKGLGFCHSR NVLHRDLKPKQ NLLINRNGEL

 Tel: 1-631-559-9269 1-516-512-3133

 Email: info@creative-biomart.com  Fax: 1-631-938-8127

 45-1 Ramsey Road, Shirley, NY 11967, USA

KLADFGGLARA FGIPVRCYSA EVVTLWYRPP DVLFGAKLYS
 TSIDMWSAGC IFAELANAGR PLFPGNDVDD QLKRFRLG TPTEEQWPSM
 TKLPDYKPYP MYPATTSLVN VVPKLNATGR DLLQNLLKCN
 PVQRISAEAA LQHPYFSDFC PPHHHHHH

Purity > 90% by SDS - PAGE

Applications SDS-PAGE

Storage Can be stored at +4 centigrade short term (1-2 weeks). For long term storage, aliquot and store at -20 centigrade or -70 centigrade. Avoid repeated freezing and thawing cycles.

Concentration 0.25 mg/ml (determined by Absorbance at 280nm)

GENE INFORMATION

Gene Name CDK5 cyclin-dependent kinase 5 [Homo sapiens]

Official Symbol CDK5

Synonyms CDK5; cyclin-dependent kinase 5; PSSALRE; TPKII catalytic subunit; protein kinase CDK5 splicing; cell division protein kinase 5; serine/threonine-protein kinase PSSALRE; tau protein kinase II catalytic subunit;

Gene ID 1020

mRNA Refseq NM_001164410

Protein Refseq NP_001157882

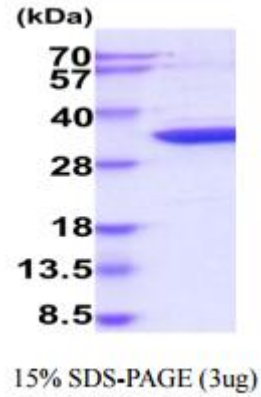
 Tel: 1-631-559-9269 1-516-512-3133

 Email: info@creative-biomart.com  Fax: 1-631-938-8127

 45-1 Ramsey Road, Shirley, NY 11967, USA

MIM 123831

UniProt ID Q00535



 Tel: 1-631-559-9269 1-516-512-3133

 Email: info@creative-biomart.com  Fax: 1-631-938-8127

 45-1 Ramsey Road, Shirley, NY 11967, USA