

Active Recombinant Human CDK5&p35 protein, GST-tagged

Cat. No. CDK5-382H **Lot. No.** (See product label)

SPECIFICATION

Product Overview	Recombinant Human CDK5&p35 fused with GST tag at N-terminal was expressed in Insect cells.
Species	Human
Source	Insect Cells
Description	CDK5 is a member of the Cyclin-Dependent Kinase family that is most abundant in the mammalian brain. Active form of CDK5, which has also been called neuronal cdc2-like kinase, is a heterodimer of CDK5 and a 25 kDa protein which is derived proteolytically from a 35 kDa brain and neuron-specific protein and is essential for the kinase activity of CDK5. CDK5 has emerged as a crucial regulator of neuronal migration in the developing central nervous system. CDK5 phosphorylates a diverse list of substrates, implicating it in the regulation of a range of cellular processes - from adhesion and motility, to synaptic plasticity and drug addiction.
Form	50mM Tris-HCl, pH 7.5, 150mM NaCl, 10mM glutathione, 0.1mM EDTA, 0.25mM DTT, 0.1mM PMSF, 25% glycerol.
Bio-activity	180 nmol/min/mg
Molecular Mass	~59 kDa/~60 kDa
Purity	>85%

 Tel: 1-631-559-9269 1-516-512-3133

 Email: info@creative-biomart.com  Fax: 1-631-938-8127

 45-1 Ramsey Road, Shirley, NY 11967, USA

Applications	Kinase Assay, Western Blot
Storage	Store product at –70 centigrade. For optimal storage, aliquot target into smaller quantities after centrifugation and store at recommended temperature. For most favorable performance, avoid repeated handling and multiple freeze/thaw cycles.
Concentration	0.1 µg/µl
Shipping	dry ice
GENE INFORMATION	
Gene Name	CDK5 cyclin-dependent kinase 5 [Homo sapiens]
Official Symbol	CDK5
Synonyms	CDK5; cyclin-dependent kinase 5; PSSALRE; TPKII catalytic subunit; protein kinase CDK5 splicing; cell division protein kinase 5; serine/threonine-protein kinase PSSALRE; tau protein kinase II catalytic subunit;
Gene ID	1020
mRNA Refseq	NM_004935
Protein Refseq	NP_004926
MIM	123831
UniProt ID	Q00535
Chromosome	7q36

 Tel: 1-631-559-9269 1-516-512-3133

 Email: info@creative-biomart.com  Fax: 1-631-938-8127

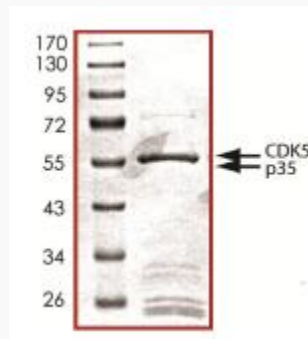
 45-1 Ramsey Road, Shirley, NY 11967, USA


Location**Pathway**

Alzheimers disease, organism-specific biosystem; Alzheimers disease, conserved biosystem; Axon guidance, organism-specific biosystem; Axon guidance, conserved biosystem; Axon guidance, organism-specific biosystem; CRMPs in Sema3A signaling, organism-specific biosystem; Cocaine addiction, organism-specific biosystem;

Function

ATP binding; ErbB-2 class receptor binding; ErbB-3 class receptor binding; acetylcholine receptor activator activity; cyclin-dependent protein kinase activity; kinase activity; nucleotide binding; p53 binding; protein binding; protein kinase activity; protein serine/threonine kinase activity; protein serine/threonine kinase activity; protein serine/threonine kinase activity; tau-protein kinase activity;



 Tel: 1-631-559-9269 1-516-512-3133

 Email: info@creative-biomart.com  Fax: 1-631-938-8127

 45-1 Ramsey Road, Shirley, NY 11967, USA