

## Recombinant Human CDK5 protein, GST-tagged

Cat. No. CDK5-965H Lot. No. (See product label)

### SPECIFICATION

<b>Product Overview</b>	Recombinant Human CDK5 protein(NP_004926.1) (Met 1- 292) was expressed in Insect Cells, fused with the GST tag at the N-terminus.
<b>Species</b>	Human
<b>Source</b>	Insect Cells
<b>ProteinLength</b>	1-292 aa
<b>Form</b>	Lyophilized from sterile PBS, 0.5mM GSH, pH 7.0.
<b>Molecular Mass</b>	The recombinant human CDK5/GST chimera consists of 516 amino acids and has a predicted molecular mass of 59.6 kDa as estimated in SDS-PAGE under reducing conditions.
<b>Endotoxin</b>	< 1.0 EU per µg of the protein as determined by the LAL method.
<b>Purity</b>	> 94 % as determined by SDS-PAGE
<b>Storage</b>	Store it under sterile conditions at -20°C to -80°C upon receiving. Recommend to aliquot the protein into smaller quantities for optimal storage. Avoid repeated freeze-thaw cycles.
<b>Reconstitution</b>	It is recommended that sterile water be added to the vial to prepare a stock solution of 0.2 ug/ul. Centrifuge the vial at 4°C before opening to recover the entire contents.

 Tel: 1-631-559-9269 1-516-512-3133

 Email: [info@creative-biomart.com](mailto:info@creative-biomart.com)  Fax: 1-631-938-8127

 45-1 Ramsey Road, Shirley, NY 11967, USA

<b>protein Refseq-Weblink</b>	<a href="http://www.ncbi.nlm.nih.gov/protein/NP_001157882.1">http://www.ncbi.nlm.nih.gov/protein/NP_001157882.1</a>
-------------------------------	---

<b>Unit ID</b>	Q00535
----------------	--------

<b>Unit ID-Weblink</b>	<a href="http://www.uniprot.org/uniprot/Q00535">http://www.uniprot.org/uniprot/Q00535</a>
------------------------	---

## GENE INFORMATION

<b>Gene Name</b>	CDK5 cyclin-dependent kinase 5 [ Homo sapiens ]
------------------	---

<b>Official Symbol</b>	CDK5
------------------------	------

<b>Synonyms</b>	CDK5; cyclin-dependent kinase 5; PSSALRE; TPKII catalytic subunit; protein kinase CDK5 splicing; cell division protein kinase 5; serine/threonine-protein kinase PSSALRE; tau protein kinase II catalytic subunit;
-----------------	--

<b>Gene ID</b>	1020
----------------	------

<b>mRNA Refseq</b>	<a href="#">NM_001164410</a>
--------------------	------------------------------

<b>protein Refseq</b>	NP_001157882
-----------------------	--------------

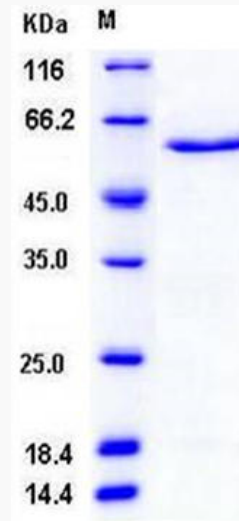
<b>MIM</b>	123831
------------	--------

 Tel: 1-631-559-9269 1-516-512-3133

 Email: [info@creative-biomart.com](mailto:info@creative-biomart.com)  Fax: 1-631-938-8127

 45-1 Ramsey Road, Shirley, NY 11967, USA

**SDS-PAGE**



 Tel: 1-631-559-9269 1-516-512-3133

 Email: [info@creative-biomart.com](mailto:info@creative-biomart.com)  Fax: 1-631-938-8127

 45-1 Ramsey Road, Shirley, NY 11967, USA