

Recombinant Human CDK6 Protein, GST-Tagged

Cat. No. CDK6-1028H Lot. No. (See product label)

SPECIFICATION

Product Overview	Human CDK6 full-length ORF (AAH52264, 1 a.a. - 326 a.a.) recombinant protein with GST-tag at N-terminal.
Species	Human
Source	Wheat Germ
Description	<p>The protein encoded by this gene is a member of the cyclin-dependent protein kinase (CDK) family. CDK family members are highly similar to the gene products of <i>Saccharomyces cerevisiae cdc28</i>, and <i>Schizosaccharomyces pombe cdc2</i>, and are known to be important regulators of cell cycle progression. This kinase is a catalytic subunit of the protein kinase complex that is important for cell cycle G1 phase progression and G1/S transition. The activity of this kinase first appears in mid-G1 phase, which is controlled by the regulatory subunits including D-type cyclins and members of INK4 family of CDK inhibitors. This kinase, as well as CDK4, has been shown to phosphorylate, and thus regulate the activity of, tumor suppressor protein Rb. Expression of this gene is up-regulated in some types of cancer. Multiple alternatively spliced variants, encoding the same protein, have been identified. [provided by RefSeq, Nov 2009]</p>
Molecular Mass	61.6 kDa
AA Sequence	MEKDGLCRADQQYECVAEIGEGAYGKVKARDLKNNGRFVALKRVRVQTGEEGMP LSTIREVAVLRHLETFEHPNVVRLFDVCTVSRDRETKLTLVFEHVDQDLTTYLDKVP

 Tel: 1-631-559-9269 1-516-512-3133

 Email: info@creative-biomart.com  Fax: 1-631-938-8127

 45-1 Ramsey Road, Shirley, NY 11967, USA

EPGVPTETIKDMMFQLLRGLDFLHSHRVVHRDLKPQNILVTSSGQIKLADFGLARIYS
 FQMALTSVVVTLWYRAPEVLLQSSYATPVDLWSVGCIFAEMFRRKPLFRGSSDVDQ
 LGKILDVIGLPGEEDWPRDVALPRQAFHSKSAQPIEKFVTDIDELGKDLLKCLTFNP
 AKRISAYSALSHPYFQDLERCKENLDLHPPSQNTSELNTA

Applications
 Enzyme-linked Immunoabsorbent Assay
 Western Blot (Recombinant protein)
 Antibody Production
 Protein Array

Storage Store at -80 centigrade. Aliquot to avoid repeated freezing and thawing.

Storage Buffer 50 mM Tris-HCl, 10 mM reduced Glutathione, pH=8.0 in the elution buffer.

GENE INFORMATION

Gene Name [CDK6 cyclin-dependent kinase 6 \[Homo sapiens \]](#)

Official Symbol [CDK6](#)

Synonyms CDK6; cyclin-dependent kinase 6; PLSTIRE; cell division protein kinase 6; serine/threonine-protein kinase PLSTIRE; MGC59692;

Gene ID [1021](#)

mRNA Refseq [NM_001145306](#)

Protein Refseq [NP_001138778](#)

MIM [603368](#)

 Tel: 1-631-559-9269 1-516-512-3133

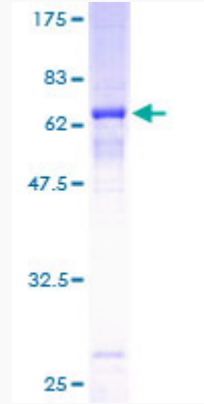
 Email: info@creative-biomart.com  Fax: 1-631-938-8127

 45-1 Ramsey Road, Shirley, NY 11967, USA


UniProt ID

Q00534

Quality Control
Testing



12.5% SDS-PAGE Stained with Coomassie Blue.

 Tel: 1-631-559-9269 1-516-512-3133

 Email: info@creative-biomart.com  Fax: 1-631-938-8127

 45-1 Ramsey Road, Shirley, NY 11967, USA