

Active Recombinant Human CDK6 Protein, GST-Tagged

Cat. No. CDK6-1032H Lot. No. (See product label)

SPECIFICATION

Product Overview	Human CDK6 (NP_001250.1, 1 a.a. - 326 a.a.) and CCND3 (AAA51927.1, 1 a.a. - 292 a.a.) full-length recombinant protein with with GST tag expressed in baculovirus infected Sf21 cells.
Species	Human
Source	Insect Cells
Description	<p>The protein encoded by this gene is a member of the cyclin-dependent protein kinase (CDK) family. CDK family members are highly similar to the gene products of <i>Saccharomyces cerevisiae cdc28</i>, and <i>Schizosaccharomyces pombe cdc2</i>, and are known to be important regulators of cell cycle progression. This kinase is a catalytic subunit of the protein kinase complex that is important for cell cycle G1 phase progression and G1/S transition. The activity of this kinase first appears in mid-G1 phase, which is controlled by the regulatory subunits including D-type cyclins and members of INK4 family of CDK inhibitors. This kinase, as well as CDK4, has been shown to phosphorylate, and thus regulate the activity of, tumor suppressor protein Rb. Expression of this gene is up-regulated in some types of cancer. Multiple alternatively spliced variants, encoding the same protein, have been identified. [provided by RefSeq, Nov 2009]</p>
Form	Liquid
Bio-activity	The activity was measured by off-chip mobility shift assay. The enzyme was

 Tel: 1-631-559-9269 1-516-512-3133

 Email: info@creative-biomart.com  Fax: 1-631-938-8127

 45-1 Ramsey Road, Shirley, NY 11967, USA

incubated with fluorescence-labeled substrate and Mg (or Mn)/ATP. The phosphorylated and unphosphorylated substrates were separated and detected by LabChip 3000.
 Substrate: DYRKtide-F. ATP: 200 μM

Molecular Mass	64 kDa
Purity	94 % by SDS-PAGE/CBB staining
Applications	Functional Study SDS-PAGE
Storage	Store at -80 centigrade. Aliquot to avoid repeated freezing and thawing.
Storage Buffer	In 50 mM Tris-HCl, 150 mM NaCl, pH 7.5 (0.1% CHAPS, 1 mM DTT, 10% glycerol)

GENE INFORMATION

Gene Name	CDK6 cyclin-dependent kinase 6 [Homo sapiens]
Official Symbol	CDK6
Synonyms	CDK6; cyclin-dependent kinase 6; PLSTIRE; cell division protein kinase 6; serine/threonine-protein kinase PLSTIRE; MGC59692;
Gene ID	1021
mRNA Refseq	NM_001145306
Protein Refseq	NP_001138778

 Tel: 1-631-559-9269 1-516-512-3133

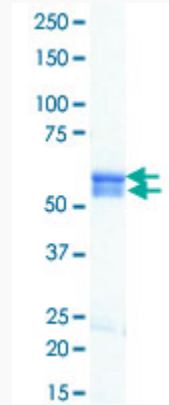
 Email: info@creative-biomart.com  Fax: 1-631-938-8127

 45-1 Ramsey Road, Shirley, NY 11967, USA

MIM 603368

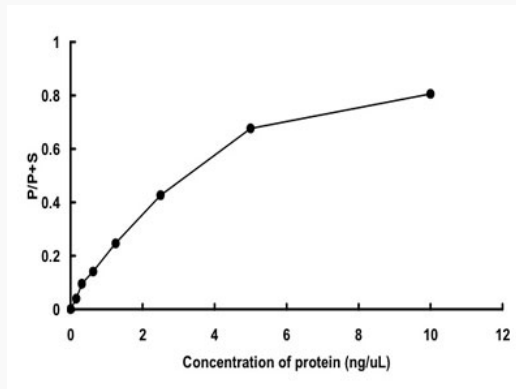
UniProt ID Q00534

Quality Control
Testing



Loading 1 µg protein in SDS-PAGE

Result of activity
analysis



Tel: 1-631-559-9269 1-516-512-3133

Email: info@creative-biomart.com Fax: 1-631-938-8127

45-1 Ramsey Road, Shirley, NY 11967, USA