

Recombinant Human CDK6 Protein, Myc/DDK-tagged, C13 and N15-labeled

Cat. No. CDK6-3246H Lot. No. (See product label)

SPECIFICATION

Product Overview

CDK6 MS Standard C13 and N15-labeled recombinant protein (NP_001138778) with a C-terminal MYC/DDK tag, was expressed in HEK293 cells.

Species

Human

Source

HEK293

Description

The protein encoded by this gene is a member of the CMGC family of serine/threonine protein kinases. This kinase is a catalytic subunit of the protein kinase complex that is important for cell cycle G1 phase progression and G1/S transition. The activity of this kinase first appears in mid-G1 phase, which is controlled by the regulatory subunits including D-type cyclins and members of INK4 family of CDK inhibitors. This kinase, as well as CDK4, has been shown to phosphorylate, and thus regulate the activity of, tumor suppressor protein Rb. Altered expression of this gene has been observed in multiple human cancers. A mutation in this gene resulting in reduced cell proliferation, and impaired cell motility and polarity, and has been identified in patients with primary microcephaly.

Molecular Mass

36.9 kDa

AA Sequence

MEKDGLCRADQQYECVAEIGEGAYGKVKARDLKNNGRFVALKRVRVQTGEEGMP
LSTIREVAVLRHLETFEHPNVVRLFDVCTVSRTDRETKLTLVFEHVDQDLTTYLDKVP
EPGVPTETIKDMMFQLLRGLDFLHSHRVVHRDLKPQNILVTSSGQIKLADFGLARIYS

 Tel: 1-631-559-9269 1-516-512-3133

 Email: info@creative-biomart.com  Fax: 1-631-938-8127

 45-1 Ramsey Road, Shirley, NY 11967, USA



FQMALTSVVVTLWYRAPEVLLQSSYATPVDLWSVGCIFAEMFRRKPLFRGSSDVDQ
LGKILDVIGLPGCEEDWPRDVALPRQAFHSKSAQPIEFVTDIDELGKDLLLKCLTFNP
AKRISAYSALSHPYFQDLERCKENLDShLPPSQNTSELNTATRTRPLEQKLISEEDLA
ANDILDYKDDDDKV

Purity > 80% as determined by SDS-PAGE and Coomassie blue staining

Stability Stable for 3 months from receipt of products under proper storage and handling conditions.

Storage Store at -80 centigrade. Avoid repeated freeze-thaw cycles.

Concentration 50 µg/mL as determined by BCA

Storage Buffer 100 mM glycine, 25 mM Tris-HCl, pH 7.3.

GENE INFORMATION

Gene Name CDK6 cyclin-dependent kinase 6 [Homo sapiens (human)]

Official Symbol CDK6

Synonyms CDK6; cyclin-dependent kinase 6; PLSTIRE; cell division protein kinase 6; serine/threonine-protein kinase PLSTIRE; MGC59692;

Gene ID 1021

mRNA Refseq NM_001145306

Protein Refseq NP_001138778

Tel: 1-631-559-9269 1-516-512-3133

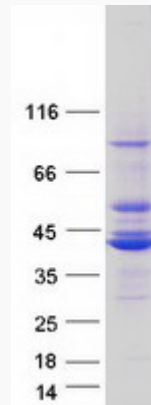
Email: info@creative-biomart.com Fax: 1-631-938-8127


45-1 Ramsey Road, Shirley, NY 11967, USA

MIM 603368


UniProt ID Q00534

SDS-PAGE



 Tel: 1-631-559-9269 1-516-512-3133

 Email: info@creative-biomart.com  Fax: 1-631-938-8127

 45-1 Ramsey Road, Shirley, NY 11967, USA