

Active Recombinant Full Length Human CDK6 Protein, GST-tagged

Cat. No. CDK6-4947HF **Lot. No.** (See product label)

SPECIFICATION

Product Overview	Full-length human CDK6 [1-326(end) amino acids of accession number NP_001250.1] was co-expressed as N-terminal GST-fusion protein (64 kDa) with human GST-CyclinD1(CCND1) [1-295(end) amino acids of accession number NP_444284.1] using baculovirus expression system. GST-CDK6/CycD1 was purified by using glutathione sepharose chromatography.
Species	Human
Source	Sf21 Cells
ProteinLength	1-326(end)
Form	50 mM Tris-HCl, 150 mM NaCl, 0.05% Brij35, 1 mM DTT, 10% glycerol, pH7.5
Bio-activity	The activity was measured by off-chip mobility shift assay. The enzyme was incubated with fluorescence-labeled substrate and Mg(or Mn)/ATP. The phosphorylated and unphosphorylated substrates were separated and detected by LabChip™3000.
Purity	91%
Applications	SDS-PAGE
Storage	Store at -80C. Avoid repeating freeze-thaws.

 Tel: 1-631-559-9269 1-516-512-3133

 Email: info@creative-biomart.com  Fax: 1-631-938-8127

 45-1 Ramsey Road, Shirley, NY 11967, USA

GENE INFORMATION

Gene Name cyclin-dependent kinase 6

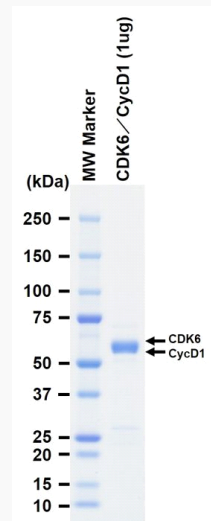
Official Symbol CDK6

Synonyms CDK6;MCPH12;PLSTIRE


Protein Refseq [NP_001250.1](#)

UniProt ID [Q00534](#)


SDS-PAGE

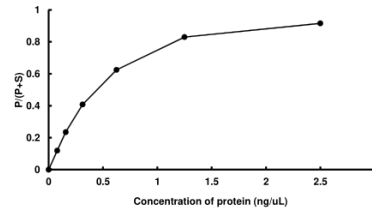


The purity was assessed by SDS-PAGE/CBB staining.

 Tel: 1-631-559-9269 1-516-512-3133

 Email: info@creative-biomart.com  Fax: 1-631-938-8127

 45-1 Ramsey Road, Shirley, NY 11967, USA

Activity data**Activity data**

The activity was measured by off-chip mobility shift assay. The enzyme was incubated with fluorescence-labeled substrate and Mg(or Mn)/ATP. The phosphorylated and unphosphorylated substrates were separated and detected by LabChip™3000.

 Tel: 1-631-559-9269 1-516-512-3133

 Email: info@creative-biomart.com  Fax: 1-631-938-8127

 45-1 Ramsey Road, Shirley, NY 11967, USA