

Active Recombinant Full Length Human CDK6 Protein, GST-tagged

Cat. No. CDK6-6342HF **Lot. No.** (See product label)

SPECIFICATION

Product Overview Full-length human CDK6 [1-326(end) amino acids of accession number NP_001250.1] was co-expressed as N-terminal GST-fusion protein (64 kDa) with human GST-CyclinD3 [1-292(end) amino acids of accession number AAA51927.1] using baculovirus expression system. GST-CDK6/CycD3 was purified by using glutathione sepharose chromatography and activated with His-tagged CDK7. Activated GST- CDK6/CycD3 was purified using glutathione sepharose chromatography.

Species Human

Source Sf21 Cells

ProteinLength 1-326(end)

Form 50 mM Tris-HCl, 150 mM NaCl, 0.05% Brij35, 1 mM DTT, 10% glycerol, pH7.5

Bio-activity The activity was measured by off-chip mobility shift assay. The enzyme was incubated with fluorescence-labeled substrate and Mg(or Mn)/ATP. The phosphorylated and unphosphorylated substrates were separated and detected by LabChip™3000.

Purity 94%

Applications SDS-PAGE

 Tel: 1-631-559-9269 1-516-512-3133

 Email: info@creative-biomart.com  Fax: 1-631-938-8127

 45-1 Ramsey Road, Shirley, NY 11967, USA

Storage Store at -80C. Avoid repeating freeze-thaws.

GENE INFORMATION

Gene Name cyclin-dependent kinase 6

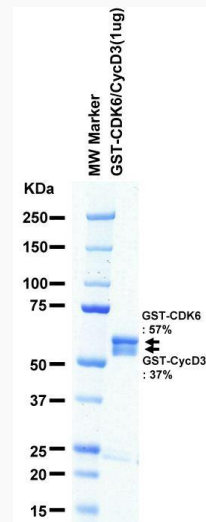
Official Symbol CDK6

Synonyms CDK6;MCPH12;PLSTIRE

Protein Refseq [NP_001250.1](#)

UniProt ID [Q00534](#)

SDS-PAGE

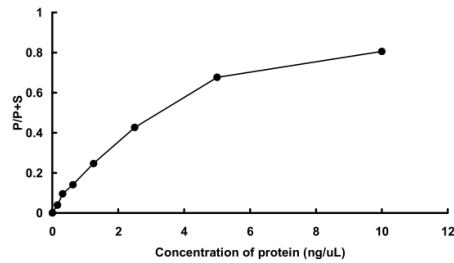


The purity was assessed by SDS-PAGE/CBB staining.

 Tel: 1-631-559-9269 1-516-512-3133

 Email: info@creative-biomart.com  Fax: 1-631-938-8127

 45-1 Ramsey Road, Shirley, NY 11967, USA

Activity data**Activity data**

The activity was measured by off-chip mobility shift assay. The enzyme was incubated with fluorescence-labeled substrate and Mg(or Mn)/ATP. The phosphorylated and unphosphorylated substrates were separated and detected by LabChip™3000.

 Tel: 1-631-559-9269 1-516-512-3133

 Email: info@creative-biomart.com  Fax: 1-631-938-8127

 45-1 Ramsey Road, Shirley, NY 11967, USA