

# Recombinant Full Length Human CDK6 Protein, C-Flag-tagged

Cat. No. CDK6-790HFL Lot. No. (See product label)

## SPECIFICATION

<b>Product Overview</b>	Recombinant Full Length Human CDK6 Protein, fused to Flag-tag at C-terminus, was expressed in Mammalian cells.
<b>Species</b>	Human
<b>Source</b>	Mammalian Cells
<b>Description</b>	The protein encoded by this gene is a member of the CMGC family of serine/threonine protein kinases. This kinase is a catalytic subunit of the protein kinase complex that is important for cell cycle G1 phase progression and G1/S transition. The activity of this kinase first appears in mid-G1 phase, which is controlled by the regulatory subunits including D-type cyclins and members of INK4 family of CDK inhibitors. This kinase, as well as CDK4, has been shown to phosphorylate, and thus regulate the activity of, tumor suppressor protein Rb. Altered expression of this gene has been observed in multiple human cancers. A mutation in this gene resulting in reduced cell proliferation, and impaired cell motility and polarity, and has been identified in patients with primary microcephaly.
<b>Form</b>	25 mM Tris HCl, pH 7.3, 100 mM glycine, 10% glycerol.
<b>Molecular Mass</b>	36.8 kDa
<b>AA Sequence</b>	MEKDGLCRADQQYECVAEIGEGAYGKVFKARDLKNNGRFVALKRVRVQTGEEGMP LSTIREVAVLRHLET FEHPNVVRLFDVCTVSRTDRETKLTLVFEHVDQDLTTYLDKVP EPGVPTETIKDMMFQLLRGLDFLHSHR VVHRDLKPQNILVTSSGQIKLADFGLARIYS

 Tel: 1-631-559-9269 1-516-512-3133

 Email: [info@creative-biomart.com](mailto:info@creative-biomart.com)  Fax: 1-631-938-8127

 45-1 Ramsey Road, Shirley, NY 11967, USA

FQMALTSVVVTLWYRAPEVLLQSSYATPVDLWSVGCIFA EMFRRKPLFRGSSDVD  
 QLGKILDVIGLPGCEEDWPRDVALPRQAFHSSKSAQPIEKFVTDIDELGKDLLLKC  
 LTFNPAKRISAYSALSHPYFQDLERCKENLDShLPPSQNTSELNTATRTRPLEQKLIS  
 EEDLAANDILDYKDDDDKV

<b>Purity</b>	> 80% as determined by SDS-PAGE and Coomassie blue staining.
<b>Stability</b>	Stable for 12 months from the date of receipt of the product under proper storage and handling conditions. Avoid repeated freeze-thaw cycles.
<b>Storage</b>	Store at -80 centigrade.
<b>Concentration</b>	>50 ug/mL as determined by microplate BCA method.
<b>Preparation</b>	Recombinant protein was captured through anti-DDK affinity column followed by conventional chromatography steps.
<b>Protein Families</b>	Druggable Genome, Protein Kinase
<b>Protein Pathways</b>	Cell cycle, Chronic myeloid leukemia, Glioma, Melanoma, Non-small cell lung cancer, p53 signaling pathway, Pancreatic cancer, Pathways in cancer, Small cell lung cancer
<b>Full Length</b>	Full L.

## GENE INFORMATION

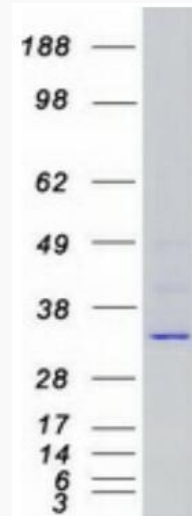
<b>Gene Name</b>	CDK6 cyclin dependent kinase 6 [ Homo sapiens (human) ]
<b>Official Symbol</b>	CDK6
<b>Synonyms</b>	MCPH12; PLSTIRE

 Tel: 1-631-559-9269 1-516-512-3133

 Email: [info@creative-biomart.com](mailto:info@creative-biomart.com)  Fax: 1-631-938-8127

 45-1 Ramsey Road, Shirley, NY 11967, USA

Gene ID	1021
mRNA Refseq	NM_001259.8
Protein Refseq	NP_001250.1
MIM	603368
UniProt ID	Q00534



Coomassie blue staining of purified CDK6 protein.

Tel: 1-631-559-9269 1-516-512-3133

Email: [info@creative-biomart.com](mailto:info@creative-biomart.com) Fax: 1-631-938-8127

45-1 Ramsey Road, Shirley, NY 11967, USA