

Recombinant Human CDK7 Protein (Met1-Phe346), N-His tagged

Cat. No. CDK7-0810H Lot. No. (See product label)

SPECIFICATION

Product Overview	Recombinant human CDK7 (Met1-Phe346) fused with the N-terminal His tag was expressed in E. coli.
Species	Human
Source	E.coli
ProteinLength	Met1-Phe346
Form	Lyophilized powder/frozen liquid
Molecular Mass	38.06 kDa
Purity	>90% as determined by SDS-PAGE.
Notes	For research use only.
Storage	Use a manual defrost freezer and avoid repeated freeze thaw cycles. Store at 2 to 8 centigrade for one week. Store at -20 to -80 centigrade for twelve months from the date of receipt.
Storage Buffer	Supplied as solution form in PBS or lyophilized from PBS.
Reconstitution	Reconstitute in sterile water for a stock solution.

 Tel: 1-631-559-9269 1-516-512-3133

 Email: info@creative-biomart.com  Fax: 1-631-938-8127

 45-1 Ramsey Road, Shirley, NY 11967, USA

Shipping They are shipped out with dry ice/blue ice unless customers require otherwise.

GENE INFORMATION

Gene Name CDK7 cyclin-dependent kinase 7 [Homo sapiens (human)]

Official Symbol CDK7

Synonyms CDK7; cyclin-dependent kinase 7; cyclin dependent kinase 7 (homolog of Xenopus MO15 cdk activating kinase), cyclin dependent kinase 7 (MO15 homolog, Xenopus laevis, cdk activating kinase); CAK; CAK1; CDKN7; MO15; STK1; p39 Mo15; protein kinase; 39 KDa protein kinase; kinase subunit of CAK; CDK-activating kinase 1; serine/threonine kinase stk1; cell division protein kinase 7; serine/threonine protein kinase 1; serine/threonine-protein kinase 1; serine/threonine protein kinase MO15; homolog of Xenopus MO15 Cdk-activating kinase; TFIIH basal transcription factor complex kinase subunit; cyclin-dependent kinase 7 (MO15 homolog, Xenopus laevis, cdk-activating kinase); HCAK; p39MO15;

Gene ID 1022

mRNA Refseq NM_001799

Protein Refseq NP_001790

MIM 601955

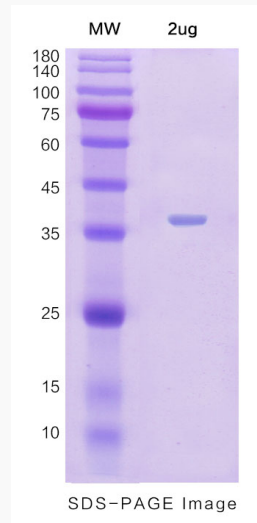
UniProt ID P50613

 Tel: 1-631-559-9269 1-516-512-3133

 Email: info@creative-biomart.com  Fax: 1-631-938-8127

 45-1 Ramsey Road, Shirley, NY 11967, USA

SDS-PAGE



 Tel: 1-631-559-9269 1-516-512-3133

 Email: info@creative-biomart.com  Fax: 1-631-938-8127

 45-1 Ramsey Road, Shirley, NY 11967, USA