

## Recombinant Human CDK8/CCNC protein, GST-tagged

Cat. No. CDK8-CCNC-314H Lot. No. (See product label)

### SPECIFICATION

<b>Product Overview</b>	Recombinant full-length human CDK8/CCNC was expressed by baculovirus in Sf9 insect cells using an N-terminal GST tag.
<b>Species</b>	Human
<b>Source</b>	Insect Cells
<b>Description</b>	CDK8 is a member of the CDK family which are important regulators of cell cycle progression. CDK8 associates with Cyclin C and is a component of the RNA polymerase II holoenzyme complex that phosphorylates the carboxy-terminal domain (CTD) of the largest subunit of RNA polymerase II. CDK8 regulate transcription by targeting the CDK7/cyclin H subunits of the general transcription initiation factor IIH (TFIIH). Inhibition of CDK8 expression inhibits proliferation in colon cancer cells characterized by high levels of CDK8 and beta-catenin hyperactivity. CDK8 kinase activity is necessary for $\beta$ -catenin-driven transformation and for expression of several $\beta$ -catenin transcriptional targets.
<b>Form</b>	50mM Tris-HCl, pH 7.5, 50mM NaCl, 10mM glutathione, 0.1mM EDTA, 0.25mM DTT, 0.1mM PMSF, 25% glycerol
<b>Molecular Mass</b>	CDK8 ~84kDa and CCNC ~55 kDa
<b>Purity</b>	The purity of CDK8/CCNC was determined to be >70% by densitometry.
<b>Applications</b>	WB

 Tel: 1-631-559-9269 1-516-512-3133

 Email: [info@creative-biomart.com](mailto:info@creative-biomart.com)  Fax: 1-631-938-8127

 45-1 Ramsey Road, Shirley, NY 11967, USA

<b>Stability</b>	1 year at -70 centigrade
<b>Storage</b>	Store product at -70 centigrade. For optimal storage, aliquot target into smaller quantities after centrifugation and store at recommended temperature. For most favorable performance, avoid repeated handling and multiple freeze/thaw cycles.
<b>Concentration</b>	0.1 µg/µL

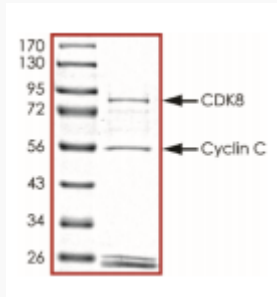
## GENE INFORMATION

<b>Gene Name</b>	cyclin dependent kinase 8 [ Homo sapiens (human) ]; cyclin C [ Homo sapiens (human) ]
<b>Official Symbol</b>	CDK8; CCNC
<b>Synonyms</b>	CDK8; K35, MGC126074, MGC126075; CyclinC; CCNC; CycC
<b>Gene ID</b>	1024; 892
<b>mRNA Refseq</b>	NM_001260; NM_005190
<b>Protein Refseq</b>	NP_001251; NP_005181.2
<b>MIM</b>	603184; 123838
<b>UniProt ID</b>	P49336; P24863

 Tel: 1-631-559-9269 1-516-512-3133

 Email: [info@creative-biomart.com](mailto:info@creative-biomart.com)  Fax: 1-631-938-8127

 45-1 Ramsey Road, Shirley, NY 11967, USA



 Tel: 1-631-559-9269 1-516-512-3133

 Email: [info@creative-biomart.com](mailto:info@creative-biomart.com)  Fax: 1-631-938-8127

 45-1 Ramsey Road, Shirley, NY 11967, USA