

## Recombinant Human CDKL2 protein, His-tagged

Cat. No. CDKL2-3886H Lot. No. (See product label)

### SPECIFICATION

<b>Product Overview</b>	Recombinant Human CDKL2 protein(Q92772) (Met 1-His 493) was expressed in Insect Cells, with a polyhistidine tag at the N-terminus.
<b>Species</b>	Human
<b>Source</b>	Insect Cells
<b>ProteinLength</b>	1-493 aa
<b>Form</b>	Lyophilized from sterile 20mM Tris, 500mM NaCl, pH 7.4, 10% gly.
<b>Molecular Mass</b>	The recombinant human CDKL2 consists of 512 amino acids and has a calculated molecular mass of 58.3 kDa. It migrates as an approximately 63 kDa band in SDS-PAGE under reducing conditions as predicted.
<b>Endotoxin</b>	< 1.0 EU per µg of the protein as determined by the LAL method.
<b>Purity</b>	> 85 % as determined by SDS-PAGE
<b>Storage</b>	Store it under sterile conditions at -20°C to -80°C upon receiving. Recommend to aliquot the protein into smaller quantities for optimal storage. Avoid repeated freeze-thaw cycles.
<b>Reconstitution</b>	It is recommended that sterile water be added to the vial to prepare a stock solution of 0.2 ug/ul. Centrifuge the vial at 4°C before opening to recover the entire contents.

 Tel: 1-631-559-9269 1-516-512-3133

 Email: [info@creative-biomart.com](mailto:info@creative-biomart.com)  Fax: 1-631-938-8127

 45-1 Ramsey Road, Shirley, NY 11967, USA

**protein Refseq-Weblink** [http://www.ncbi.nlm.nih.gov/protein/NP\\_003939.1](http://www.ncbi.nlm.nih.gov/protein/NP_003939.1)

**Unit ID** Q92772

**Unit ID-Weblink** <https://www.uniprot.org/uniprotkb/Q92772>

## GENE INFORMATION

**Gene Name** [CDKL2 cyclin-dependent kinase-like 2 \(CDC2-related kinase\) \[ Homo sapiens \]](#)

**Official Symbol** [CDKL2](#)

**Synonyms** CDKL2; cyclin-dependent kinase-like 2 (CDC2-related kinase); cyclin-dependent kinase-like 2; KKIAMRE; P56; CDC2-related kinase; p56 KKIAMRE protein kinase; protein kinase p56 KKIAMRE; serine/threonine protein kinase KKIAMRE; serine/threonine-protein kinase KKIAMRE;

**Gene ID** [8999](#)

**mRNA Refseq** [NM\\_003948](#)

**protein Refseq** NP\_003939

**MIM** [603442](#)

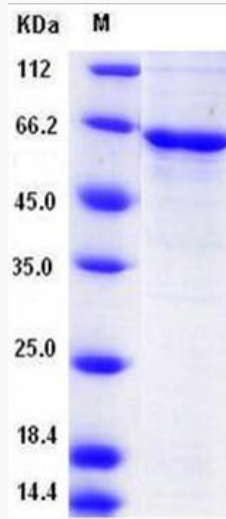
 Tel: 1-631-559-9269 1-516-512-3133

 Email: [info@creative-biomart.com](mailto:info@creative-biomart.com)  Fax: 1-631-938-8127

 45-1 Ramsey Road, Shirley, NY 11967, USA



SDS-PAGE



Tel: 1-631-559-9269 1-516-512-3133

Email: [info@creative-biomart.com](mailto:info@creative-biomart.com) Fax: 1-631-938-8127

45-1 Ramsey Road, Shirley, NY 11967, USA