

Recombinant Human CDKN1A protein, GST-tagged

Cat. No. CDKN1A-4213H **Lot. No.** (See product label)

SPECIFICATION

| | |
|-------------------------|--|
| Product Overview | Recombinant Human CDKN1A protein(6-163 aa), fused with N-terminal GST tag, was expressed in E. coli. |
| ProteinLength | 6-163 aa |
| Tag | N-GST |
| Form | The purified protein was Lyophilized from sterile PBS (58mM Na ₂ HPO ₄ , 17mM NaH ₂ PO ₄ , 68mM NaCl, pH7.4). 5 % trehalose and 5 % mannitol are added as protectant before lyophilization. |
| Purity | 85%, by SDS-PAGE with Coomassie Brilliant Blue staining. |
| Storage | Short-term storage: Store at 2-8°C for (1-2 weeks). Long-term storage: Aliquot and store at -20°C to -80°C for up to 3 months, reconstitution with sterile water and addition of an equal volume of glycerol. Avoid repeat freeze-thaw cycles. |
| Reconstitution | Reconstitute at 0.25 µg/µl in 200 µl sterile water for short-term storage. After reconstitution with sterile water, if glycerol has no effect on subsequent experiments, it is recommended to add an equal volume of glycerol for long-term storage. |
| AA Sequence | GDVRQNPCGSKACRRLFGPVDSEQLSRDCDALMAGCIQEARERWNFDFVTETPLE GDFAWERVRLGLPKLYLPTGPRRGRDELGGRRPGTSPALLQGTA EEDHVDLSL SCTLVPRSGEQAEGSPGGPGDSQGRKRRQTSMTDFYHSKRRLIFSKRK |

 Tel: 1-631-559-9269 1-516-512-3133

 Email: info@creative-biomart.com  Fax: 1-631-938-8127

 45-1 Ramsey Road, Shirley, NY 11967, USA

GENE INFORMATION

Gene Name CDKN1A cyclin-dependent kinase inhibitor 1A (p21, Cip1) [Homo sapiens]

Official Symbol CDKN1A

Synonyms CDKN1A; cyclin-dependent kinase inhibitor 1A (p21, Cip1); CDKN1; cyclin-dependent kinase inhibitor 1; CAP20; CIP1; P21; p21CIP1; p21Cip1/Waf1; SDI1; WAF1; DNA synthesis inhibitor; CDK-interacting protein 1; CDK-interaction protein 1; wild-type p53-activated fragment 1; melanoma differentiation associated protein 6; MDA-6;

Gene ID 1026

mRNA Refseq NM_000389

Protein Refseq NP_000380

MIM 116899

UniProt ID P38936

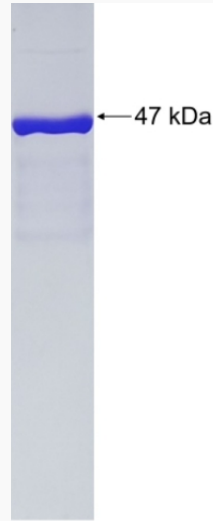
 Tel: 1-631-559-9269 1-516-512-3133

 Email: info@creative-biomart.com  Fax: 1-631-938-8127

 45-1 Ramsey Road, Shirley, NY 11967, USA



SDS-PAGE



Tel: 1-631-559-9269 1-516-512-3133

Email: info@creative-biomart.com Fax: 1-631-938-8127

45-1 Ramsey Road, Shirley, NY 11967, USA