

Recombinant Human CDKN1A protein, His-tagged

Cat. No. CDKN1A-4214H **Lot. No.** (See product label)

SPECIFICATION

Product Overview	Recombinant Human CDKN1A protein(1-149 aa), fused with N-terminal His tag, was expressed in E. coli.
ProteinLength	1-149 aa
Tag	N-His
Form	The purified protein was Lyophilized from sterile PBS (58mM Na ₂ HPO ₄ , 17mM NaH ₂ PO ₄ , 68mM NaCl, pH7.4). 5 % trehalose and 5 % mannitol are added as protectant before lyophilization.
Purity	95%, by SDS-PAGE with Coomassie Brilliant Blue staining.
Storage	Short-term storage: Store at 2-8°C for (1-2 weeks). Long-term storage: Aliquot and store at -20°C to -80°C for up to 3 months, reconstitution with sterile water and addition of an equal volume of glycerol. Avoid repeat freeze-thaw cycles.
Reconstitution	Reconstitute at 0.25 µg/µl in 200 µl sterile water for short-term storage. After reconstitution with sterile water, if glycerol has no effect on subsequent experiments, it is recommended to add an equal volume of glycerol for long-term storage.
AA Sequence	MSEPAGDVRQNPCGSKACRRLFGPVDSEQLSRDCDALMAGCIQEARERWNFDFV TETPLEGDFAWERVRLGLPKLYLPTGPRRGRDELGGRRPGTSPALLQGTAEEED HVDLSLSCTLVPRSGEQAEGSPGGPGDSQGRKRRQTSMTD

 Tel: 1-631-559-9269 1-516-512-3133

 Email: info@creative-biomart.com  Fax: 1-631-938-8127

 45-1 Ramsey Road, Shirley, NY 11967, USA

GENE INFORMATION

Gene Name [CDKN1A cyclin-dependent kinase inhibitor 1A \(p21, Cip1\) \[Homo sapiens \]](#)

Official Symbol [CDKN1A](#)

Synonyms [CDKN1A](#); cyclin-dependent kinase inhibitor 1A (p21, Cip1); [CDKN1](#); cyclin-dependent kinase inhibitor 1; [CAP20](#); [CIP1](#); [P21](#); [p21CIP1](#); [p21Cip1/Waf1](#); [SDI1](#); [WAF1](#); DNA synthesis inhibitor; CDK-interacting protein 1; CDK-interaction protein 1; wild-type p53-activated fragment 1; melanoma differentiation associated protein 6; [MDA-6](#);

Gene ID [1026](#)

mRNA Refseq [NM_000389](#)

Protein Refseq [NP_000380](#)

MIM [116899](#)

UniProt ID [P38936](#)

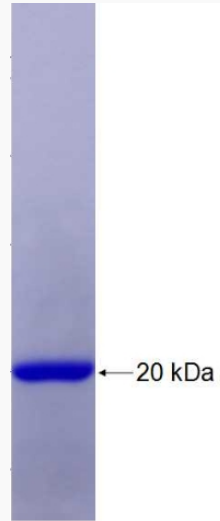
 Tel: 1-631-559-9269 1-516-512-3133

 Email: info@creative-biomart.com  Fax: 1-631-938-8127

 45-1 Ramsey Road, Shirley, NY 11967, USA



SDS-PAGE



Tel: 1-631-559-9269 1-516-512-3133

Email: info@creative-biomart.com Fax: 1-631-938-8127

45-1 Ramsey Road, Shirley, NY 11967, USA