

# Recombinant Full Length Human CDKN1B Protein, C-Flag-tagged

Cat. No. CDKN1B-2041HFL Lot. No. (See product label)

## SPECIFICATION

### Product Overview

Recombinant Full Length Human CDKN1B Protein, fused to Flag-tag at C-terminus, was expressed in Mammalian cells.

### Species

Human

### Source

Mammalian Cells

### Description

This gene encodes a cyclin-dependent kinase inhibitor, which shares a limited similarity with CDK inhibitor CDKN1A/p21. The encoded protein binds to and prevents the activation of cyclin E-CDK2 or cyclin D-CDK4 complexes, and thus controls the cell cycle progression at G1. The degradation of this protein, which is triggered by its CDK dependent phosphorylation and subsequent ubiquitination by SCF complexes, is required for the cellular transition from quiescence to the proliferative state. Mutations in this gene are associated with multiple endocrine neoplasia type IV (MEN4).

### Form

25 mM Tris HCl, pH 7.3, 100 mM glycine, 10% glycerol.

### Molecular Mass

21.9 kDa

### AA Sequence

MSNVRVSNNGSPSLERMDARQAEHPKPSACRNLFPGVDHEELTRDLEKHCRDMEEA  
 SQRKWNFDFQNHKPL EGKYEWEVEKGSLEPEFYRPPRPPKGACKVPAQESQDV  
 SGRPAAPLIGAPANSEDLVDPKTDPSDS QTGLAEQCAGIRKRPATDDSSSTQNK  
 RANRTEENVSDGSPNAGSVEQTPKKPGLRRRQT TRTRPLEQKLISEEDLAANDILD  
 YKDDDDKV

 Tel: 1-631-559-9269 1-516-512-3133

 Email: [info@creative-biomart.com](mailto:info@creative-biomart.com)  Fax: 1-631-938-8127

 45-1 Ramsey Road, Shirley, NY 11967, USA

<b>Purity</b>	> 80% as determined by SDS-PAGE and Coomassie blue staining.
<b>Stability</b>	Stable for 12 months from the date of receipt of the product under proper storage and handling conditions. Avoid repeated freeze-thaw cycles.
<b>Storage</b>	Store at -80 centigrade.
<b>Concentration</b>	>50 ug/mL as determined by microplate BCA method.
<b>Preparation</b>	Recombinant protein was captured through anti-DDK affinity column followed by conventional chromatography steps.
<b>Protein Families</b>	Druggable Genome
<b>Protein Pathways</b>	Cell cycle, Chronic myeloid leukemia, ErbB signaling pathway, Pathways in cancer, Prostate cancer, Small cell lung cancer
<b>Full Length</b>	Full L.

## GENE INFORMATION

<b>Gene Name</b>	CDKN1B cyclin dependent kinase inhibitor 1B [ Homo sapiens (human) ]
<b>Official Symbol</b>	CDKN1B
<b>Synonyms</b>	KIP1; MEN4; CDKN4; MEN1B; P27KIP1
<b>Gene ID</b>	1027
<b>mRNA Refseq</b>	NM_004064.5

 Tel: 1-631-559-9269 1-516-512-3133

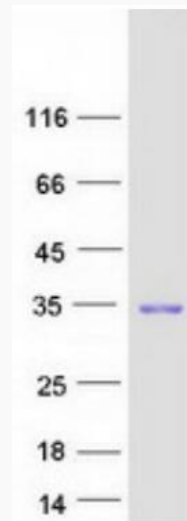
 Email: [info@creative-biomart.com](mailto:info@creative-biomart.com)  Fax: 1-631-938-8127

 45-1 Ramsey Road, Shirley, NY 11967, USA

**Protein Refseq** NP\_004055.1

**MIM** 600778

**UniProt ID** P46527



Coomassie blue staining of purified CDKN1B protein.

 Tel: 1-631-559-9269 1-516-512-3133

 Email: [info@creative-biomart.com](mailto:info@creative-biomart.com)  Fax: 1-631-938-8127

 45-1 Ramsey Road, Shirley, NY 11967, USA