

Recombinant Human CDKN1C Protein, GST-Tagged

Cat. No. CDKN1C-1059H **Lot. No.** (See product label)

SPECIFICATION

Product Overview	Human CDKN1C partial ORF (NP_000067, 1 a.a. - 100 a.a.) recombinant protein with GST-tag at N-terminal.
Species	Human
Source	Wheat Germ
Description	This gene is imprinted, with preferential expression of the maternal allele. The encoded protein is a tight-binding, strong inhibitor of several G1 cyclin/Cdk complexes and a negative regulator of cell proliferation. Mutations in this gene are implicated in sporadic cancers and Beckwith-Wiedemann syndrome, suggesting that this gene is a tumor suppressor candidate. Three transcript variants encoding two different isoforms have been found for this gene. [provided by RefSeq, Oct 2010]
Molecular Mass	36.74 kDa
AA Sequence	MSDASLRSTSTMERLVARGTFPVLVRTSACRSLFGPVDHEELSRELQARLAELNAE DQNRWDYDFQQDMPLRGPGRLLQWTEVSDSVPAFYRETVQVGRC
Applications	Enzyme-linked Immunoabsorbent Assay Western Blot (Recombinant protein) Antibody Production Protein Array
Storage	Store at -80 centigrade. Aliquot to avoid repeated freezing and thawing.

 Tel: 1-631-559-9269 1-516-512-3133

 Email: info@creative-biomart.com  Fax: 1-631-938-8127

 45-1 Ramsey Road, Shirley, NY 11967, USA

Storage Buffer 50 mM Tris-HCl, 10 mM reduced Glutathione, pH=8.0 in the elution buffer.

GENE INFORMATION

Gene Name CDKN1C cyclin-dependent kinase inhibitor 1C (p57, Kip2) [Homo sapiens]

Official Symbol CDKN1C

Synonyms CDKN1C; cyclin-dependent kinase inhibitor 1C (p57, Kip2); Beckwith Wiedemann syndrome, BWCR, BWS; cyclin-dependent kinase inhibitor 1C; KIP2; P57; p57Kip2; cyclin-dependent kinase inhibitor p57; BWS; WBS; p57; BWCR;

Gene ID 1028

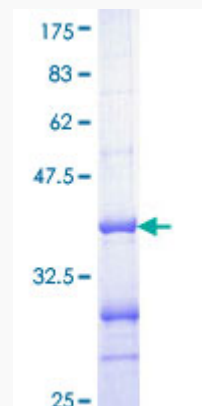
mRNA Refseq NM_000076

Protein Refseq NP_000067

MIM 600856

UniProt ID P49918

Quality Control Testing



 Tel: 1-631-559-9269 1-516-512-3133

 Email: info@creative-biomart.com  Fax: 1-631-938-8127

 45-1 Ramsey Road, Shirley, NY 11967, USA



12.5% SDS-PAGE Stained with Coomassie Blue.

 Tel: 1-631-559-9269 1-516-512-3133

 Email: info@creative-biomart.com  Fax: 1-631-938-8127

 45-1 Ramsey Road, Shirley, NY 11967, USA