

Recombinant Human CDKN2A Protein, Met 42-End, N-His tagged

Cat. No. CDKN2A-04H Lot. No. (See product label)

SPECIFICATION

Product Overview	Purified recombinant protein of Human cyclin-dependent kinase inhibitor 2A (melanoma, p16, inhibits CDK4) (CDKN2A), transcript variant 4, Met42-End, with N-terminal His tag, expressed in E. coli.
Species	Human
Source	E.coli
Protein Length	Met 42-End
Molecular Mass	13.9 kDa
Purity	> 80% as determined by SDS-PAGE and Coomassie blue staining
Notes	For testing in cell culture applications, please filter before use. Note that you may experience some loss of protein during the filtration process.
Stability	Stable for 12 months from the date of receipt of the product under proper storage and handling conditions. Avoid repeated freeze-thaw cycles.
Storage	Store at -80 centigrade.
Concentration	>0.05 µg/µL as determined by microplate BCA method

 Tel: 1-631-559-9269 1-516-512-3133

 Email: info@creative-biomart.com  Fax: 1-631-938-8127

 45-1 Ramsey Road, Shirley, NY 11967, USA

Storage Buffer 50 mM Tris-HCl, pH 8.0, 8 M urea

GENE INFORMATION

Gene Name [CDKN2A cyclin-dependent kinase inhibitor 2A \[Homo sapiens \]](#)

Official Symbol [CDKN2A](#)

Synonyms

CDKN2A; cyclin-dependent kinase inhibitor 2A; CDKN2, cyclin dependent kinase inhibitor 2A (melanoma, p16, inhibits CDK4) , MLM; ARF; CDK4I; CMM2; INK4; INK4a; MTS1; p14; p16; p16INK4a; p19; p19Arf; CDK4 inhibitor p16-INK4; multiple tumor suppressor 1; cell cycle negative regulator beta; cyclin-dependent kinase 4 inhibitor A; cyclin-dependent kinase inhibitor 2A (melanoma, p16, inhibits CDK4); MLM; P14; P16; P19; TP16; CDKN2; INK4A; MTS-1; P14ARF; P19ARF; P16INK4; P16INK4A; P16-INK4A;

Gene ID [1029](#)

mRNA Refseq [NM_058195](#)

Protein Refseq [NP_478102](#)

MIM [600160](#)

UniProt ID [P42771](#)

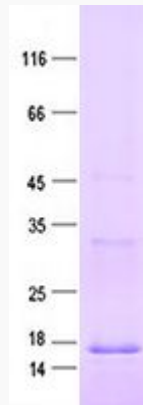
 Tel: 1-631-559-9269 1-516-512-3133

 Email: info@creative-biomart.com  Fax: 1-631-938-8127

 45-1 Ramsey Road, Shirley, NY 11967, USA



SDS-PAGE



Tel: 1-631-559-9269 1-516-512-3133

Email: info@creative-biomart.com Fax: 1-631-938-8127

45-1 Ramsey Road, Shirley, NY 11967, USA