

Recombinant Human CDKN3 Protein, GST-Tagged

Cat. No. CDKN3-1067H **Lot. No.** (See product label)

SPECIFICATION

Product Overview	Human CDKN3 full-length ORF (AAH64965, 1 a.a. - 172 a.a.) recombinant protein with GST-tag at N-terminal.
Species	Human
Source	Wheat Germ
Description	The protein encoded by this gene belongs to the dual specificity protein phosphatase family. It was identified as a cyclin-dependent kinase inhibitor, and has been shown to interact with, and dephosphorylate CDK2 kinase, thus prevent the activation of CDK2 kinase. This gene was reported to be deleted, mutated, or overexpressed in several kinds of cancers. Alternatively spliced transcript variants encoding different isoforms have been found for this gene. [provided by RefSeq, Aug 2008]
Molecular Mass	44.44 kDa
AA Sequence	MKPPSSIQTSCFKDVRRNVQKDTEELKSCGIQDIFVFCTRGELSKYRVPNLLDLYQ QCGIITHHHPIADGGTPDIASCCEIMEELTTCLKNYRKTLIHCYGGGLGRSCLVAACLLL YLSDTISPEQAIDSLRDLRGSGAIQTIKQYNYLHEFRDKLAAHLSSRDSQSRSVSR
Applications	Enzyme-linked Immunoabsorbent Assay Western Blot (Recombinant protein) Antibody Production Protein Array

 Tel: 1-631-559-9269 1-516-512-3133

 Email: info@creative-biomart.com  Fax: 1-631-938-8127

 45-1 Ramsey Road, Shirley, NY 11967, USA

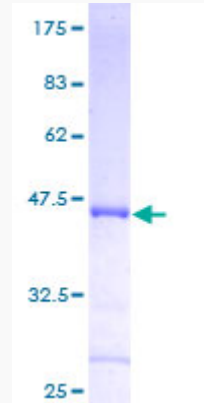
Storage	Store at -80 centigrade. Aliquot to avoid repeated freezing and thawing.
Storage Buffer	50 mM Tris-HCl, 10 mM reduced Glutathione, pH=8.0 in the elution buffer.
GENE INFORMATION	
Gene Name	CDKN3 cyclin-dependent kinase inhibitor 3 [Homo sapiens]
Official Symbol	CDKN3
Synonyms	CDKN3; cyclin-dependent kinase inhibitor 3; CDI1; CDK2 associated dual specificity phosphatase; cyclin dependent kinase inhibitor; KAP; kinase associated phosphatase; kinase-associated phosphatase; Cdk-associated protein phosphatase; cyclin-dependent kinase interactor 1; CDK2-associated dual specificity phosphatase; CDK2-associated dual-specificity phosphatase; cyclin-dependent kinase interacting protein 2; cyclin-dependent kinase-interacting protein 2; CIP2; KAP1; FLJ25787; MGC70625;
Gene ID	1033
mRNA Refseq	NM_001130851
Protein Refseq	NP_001124323
MIM	123832
UniProt ID	Q16667

 Tel: 1-631-559-9269 1-516-512-3133

 Email: info@creative-biomart.com  Fax: 1-631-938-8127

 45-1 Ramsey Road, Shirley, NY 11967, USA

**Quality Control
Testing**



12.5% SDS-PAGE Stained with Coomassie Blue.

 Tel: 1-631-559-9269 1-516-512-3133

 Email: info@creative-biomart.com  Fax: 1-631-938-8127

 45-1 Ramsey Road, Shirley, NY 11967, USA