

## Recombinant Human CDKN3 Protein, His/GST-tagged

Cat. No. CDKN3-599H Lot. No. (See product label)

### SPECIFICATION

<b>Product Overview</b>	Recombinant Human CDKN3(Met1~Arg212) fused with His/GST tag at N-terminal was expressed in E. coli.
<b>Species</b>	Human
<b>Source</b>	E.coli
<b>ProteinLength</b>	Met1~Arg212
<b>Description</b>	The protein encoded by this gene belongs to the dual specificity protein phosphatase family. It was identified as a cyclin-dependent kinase inhibitor, and has been shown to interact with, and dephosphorylate CDK2 kinase, thus prevent the activation of CDK2 kinase. This gene was reported to be deleted, mutated, or overexpressed in several kinds of cancers. Alternatively spliced transcript variants encoding different isoforms have been found for this gene.
<b>Form</b>	PBS, pH7.4, containing 0.01% SKL, 1mM DTT, 5% Trehalose and Proclin300.
<b>Molecular Mass</b>	53.8kDa
<b>Endotoxin</b>	<1.0EU per 1ug (determined by the LAL method)
<b>Purity</b>	> 95%
<b>Applications</b>	Positive Control; Immunogen; SDS-PAGE; WB.

 Tel: 1-631-559-9269 1-516-512-3133

 Email: [info@creative-biomart.com](mailto:info@creative-biomart.com)  Fax: 1-631-938-8127

 45-1 Ramsey Road, Shirley, NY 11967, USA

If bio-activity of the protein is needed, please check active protein

**Stability**

The thermal stability is described by the loss rate. The loss rate was determined by accelerated thermal degradation test, that is, incubate the protein at 37 centigrade for 48h, and no obvious degradation and precipitation were observed. The loss rate is less than 5% within the expiration date under appropriate storage condition.

**Storage**

Avoid repeated freeze/thaw cycles. Store at 2-8 centigrade for one month. Aliquot and store at -80 centigrade for 12 months.

**Reconstitution**

Reconstitute in PBS or others

## GENE INFORMATION

**Gene Name**

CDKN3 cyclin-dependent kinase inhibitor 3 [ Homo sapiens ]

**Official Symbol**

CDKN3

**Synonyms**

CDKN3; cyclin-dependent kinase inhibitor 3; CDI1; CDK2 associated dual specificity phosphatase; cyclin dependent kinase inhibitor; KAP; kinase associated phosphatase; kinase-associated phosphatase; Cdk-associated protein phosphatase; cyclin-dependent kinase interactor 1; CDK2-associated dual specificity phosphatase; CDK2-associated dual-specificity phosphatase; cyclin-dependent kinase interacting protein 2; cyclin-dependent kinase-interacting protein 2; CIP2; KAP1; FLJ25787; MGC70625;

**Gene ID**

1033

**mRNA Refseq**

NM\_001130851

**Protein Refseq**

NP\_001124323

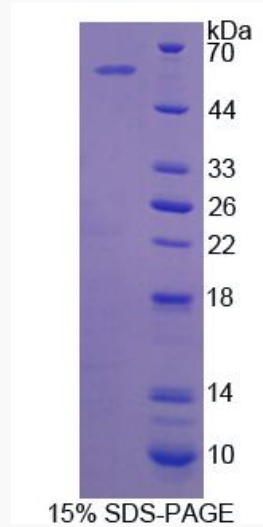
 Tel: 1-631-559-9269 1-516-512-3133

 Email: [info@creative-biomart.com](mailto:info@creative-biomart.com)  Fax: 1-631-938-8127

 45-1 Ramsey Road, Shirley, NY 11967, USA

MIM 123832

UniProt ID Q16667



 Tel: 1-631-559-9269 1-516-512-3133

 Email: [info@creative-biomart.com](mailto:info@creative-biomart.com)  Fax: 1-631-938-8127

 45-1 Ramsey Road, Shirley, NY 11967, USA