

Recombinant Human Cyclin-Dependent Kinase Inhibitor 3, GST-tagged

Cat. No. CDKN3-700H **Lot. No.** (See product label)

SPECIFICATION

Product Overview	Recombinant Human Cyclin-Dependent Kinase Inhibitor 3 with a GST tag is expressed in <i>E. coli</i> .
Species	Human
Source	E.coli
Description	CDKN3 is a member of the dual specificity protein phosphatase family that acts as a cyclin-dependent kinase inhibitor. CDKN3 has been shown to interact with and dephosphorylate specifically the CDK2 kinase thereby preventing its activation. CDKN3 has been reported to be deleted, mutated, or overexpressed in several kinds of cancers. Increased expression of CDKN3 leads to increased levels of kinase-associated phosphatase activity that inhibits the G(1)/S transition of the cell cycle by dephosphorylating the cyclin-dependent kinases.
Purity	Greater than 90 % pure as determined by SDS-PAGE analysis.
Molecular Weight	50 kDa band by SDS-PAGE analysis.
Formulation	The recombinant Cdc25C (catalytic domain) is supplied frozen in a buffer containing 20mM Tris-HCl (pH 8.2), 1mM EDTA, 2 mM DTT and 50% glycerol.
Storage	Stable for 12 months at -70°C from date of shipment. For maximum recovery of product, centrifuge the original vial after thawing and prior to removing the cap.

 Tel: 1-631-559-9269 1-516-512-3133

 Email: info@creative-biomart.com  Fax: 1-631-938-8127

 45-1 Ramsey Road, Shirley, NY 11967, USA

Aliquot enzyme to avoid repeated freezing and thawing.

GENE INFORMATION

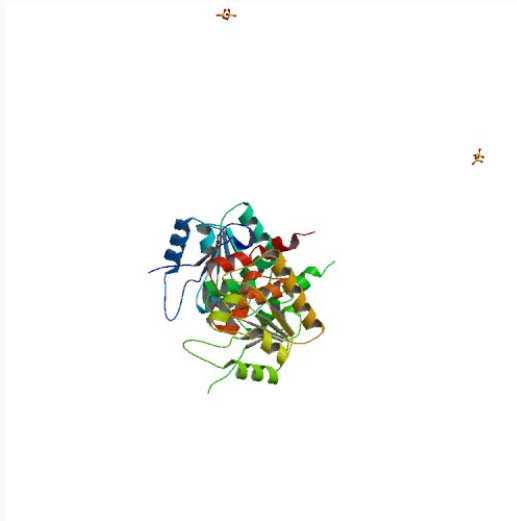
Gene Name	CDKN3 cyclin-dependent kinase inhibitor 3 [Homo sapiens]
Synonyms	cyclin-dependent kinase inhibitor 3; KAP; CDI1; CIP2; KAP1; FLJ25787; MGC70625; CDKN3; kinase-associated phosphatase; Cdk-associated protein phosphatase; cyclin-dependent kinase interactor 1; CDK2-associated dual specificity phosphatase; cyclin-dependent kinase interacting protein 2; EC 3.1.3.48, EC 3.1.3.16; CDK2-associated dual-specificity phosphatase; Cyclin-dependent kinase interactor 1; Cyclin-dependent kinase-interacting protein 2; Kinase-associated phosphatase
Gene ID	1033
mRNA Refseq	NM_001130851
Protein Refseq	NP_001124323
MIM	157680
UniProt ID	Q16667
Chromosome Location	14q22
Function	hydrolase activity; protein binding; protein serine/threonine phosphatase activity; protein tyrosine phosphatase activity; protein tyrosine/serine/threonine phosphatase activity

 Tel: 1-631-559-9269 1-516-512-3133

 Email: info@creative-biomart.com  Fax: 1-631-938-8127

 45-1 Ramsey Road, Shirley, NY 11967, USA

PDB rendering based
on 1fpz.



 Tel: 1-631-559-9269 1-516-512-3133

 Email: info@creative-biomart.com  Fax: 1-631-938-8127

 45-1 Ramsey Road, Shirley, NY 11967, USA