

Recombinant Human cerebral dopamine neurotrophic factor Protein, His tagged

Cat. No. CDNF-069H Lot. No. (See product label)

SPECIFICATION

Product Overview	Recombinant human CDNF protein (Q49AH0) (Gln 25-Leu 187) with a His tag at the C-terminus was expressed in HEK293.
Species	Human
Source	HEK293
ProteinLength	25-187aa
Description	Trophic factor for dopamine neurons. Prevents the 6-hydroxydopamine (6-OHDA)-induced degeneration of dopaminergic neurons. When administered after 6-OHDA-lesioning, restores the dopaminergic function and prevents the degeneration of dopaminergic neurons in substantia nigra.
Tag	C-His
Molecular Mass	19.9 kDa
Endotoxin	Less than 1.0 EU/μg by the LAL method.
Purity	>95% as determined by SDS-PAGE.
Storage	Please avoid repeated freeze-thaw cycles. Samples are stable for up to twelve months from date of receipt at -20 to -80 centigrade. It is recommended that aliquot

 Tel: 1-631-559-9269 1-516-512-3133

 Email: info@creative-biomart.com  Fax: 1-631-938-8127

 45-1 Ramsey Road, Shirley, NY 11967, USA

the reconstituted solution to minimize freeze-thaw cycles.

Storage Buffer

Lyophilized from a 0.2 µm filtered solution of PBS, pH7.4, 5% Trehalose, 5% mannitol.

Reconstitution

Reconstitute at 250 µg/mL in sterile water.

GENE INFORMATION

Gene Name

CDNF cerebral dopamine neurotrophic factor [Homo sapiens (human)]

Official Symbol

CDNF

Synonyms

CDNF; cerebral dopamine neurotrophic factor; arginine rich, mutated in early stage tumors like 1, ARMETL1; conserved dopamine neurotrophic factor; ARMET-like protein 1; arginine-rich, mutated in early stage tumors-like 1; ARMETL1;

Gene ID

441549

mRNA Refseq

NM_001029954

Protein Refseq

NP_001025125

MIM

611233

UniProt ID

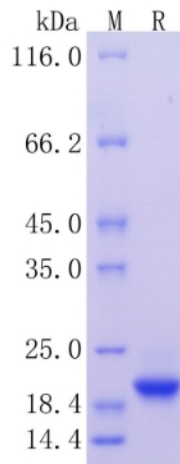
Q49AH0

 Tel: 1-631-559-9269 1-516-512-3133

 Email: info@creative-biomart.com  Fax: 1-631-938-8127

 45-1 Ramsey Road, Shirley, NY 11967, USA

**Protein on SDS-
PAGE under
reducing (R)
condition.**



 Tel: 1-631-559-9269 1-516-512-3133

 Email: info@creative-biomart.com  Fax: 1-631-938-8127

 45-1 Ramsey Road, Shirley, NY 11967, USA