

Recombinant Human CDNF Protein (Gln27-Leu187), C-His tagged, Animal-free, Carrier-free

Cat. No. CDNF-231H Lot. No. (See product label)

SPECIFICATION

Product Overview	Recombinant Human CDNF Protein (Gln27-Leu187) with C-His tag was expressed in E. coli and Animal-free as well as Carrier-free.
Species	Human
Source	E.coli
ProteinLength	Gln27-Leu187
Description	<p>Cerebral dopamine neurotrophic factor (CDNF) also known as ARMETL1, which is a member of ARMET family. CDNF is a 20.9 kDa neurotrophic factor containing 187 residues that widely expressed in various tissues, including embryonic and postnatal brain. Besides, CDNF shows the ability to protect the degeneration of dopaminergic neurons in Parkinson's disease, induced by 6-hydroxydopamine (6-OHDA). Moreover, as a neurotrophic factor, CDNF also can repair the dopaminergic function of dopaminergic neurons.</p>
Form	Lyophilized
Molecular Mass	<p>The protein has a calculated MW of 19.26 kDa.</p> <p>The protein migrates as 18 kDa under reducing condition (SDS-PAGE analysis).</p>
Endotoxin	< 0.1 EU/μg of the protein by the LAL method.

 Tel: 1-631-559-9269 1-516-512-3133

 Email: info@creative-biomart.com  Fax: 1-631-938-8127

 45-1 Ramsey Road, Shirley, NY 11967, USA

Purity	>98% as determined by SDS-PAGE analysis.
Storage	This product is stable after storage at: -20 centigrade for 12 months in lyophilized state from date of receipt. -20 or -80 centigrade for 1 month under sterile conditions after reconstitution. Avoid repeated freeze/thaw cycles.
Storage Buffer	Lyophilized from a 0.2 µm filtered solution of PBS, pH 8.0.
Reconstitution	It is recommended to reconstitute the lyophilized protein in sterile H2O to a concentration not less than 200 µg/mL and incubate the stock solution for at least 20 min to ensure sufficient re-dissolved.
Shipping	The product is shipped with polar packs. Upon receipt, store it immediately at -20 centigrade or lower for long term storage.

GENE INFORMATION

Gene Name	CDNF cerebral dopamine neurotrophic factor [Homo sapiens (human)]
Official Symbol	CDNF
Synonyms	CDNF; cerebral dopamine neurotrophic factor; arginine rich, mutated in early stage tumors like 1 , ARMETL1; conserved dopamine neurotrophic factor; ARMET-like protein 1; arginine-rich, mutated in early stage tumors-like 1; ARMETL1;
Gene ID	441549
mRNA Refseq	NM_001029954
Protein Refseq	NP_001025125

 Tel: 1-631-559-9269 1-516-512-3133

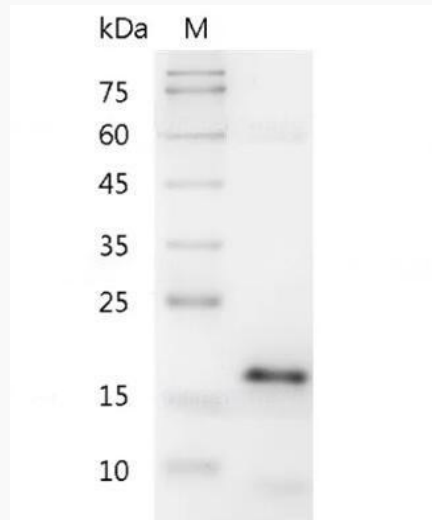
 Email: info@creative-biomart.com  Fax: 1-631-938-8127

 45-1 Ramsey Road, Shirley, NY 11967, USA

MIM 611233

UniProt ID Q49AH0

**SDS-PAGE analysis
of recombinant
human CDFN.**



 Tel: 1-631-559-9269 1-516-512-3133

 Email: info@creative-biomart.com  Fax: 1-631-938-8127

 45-1 Ramsey Road, Shirley, NY 11967, USA