

Recombinant Human CDNF Protein, Myc/DDK-tagged, C13 and N15-labeled

Cat. No. CDNF-5915H **Lot. No.** (See product label)

SPECIFICATION

Product Overview	CDNF MS Standard C13 and N15-labeled recombinant protein (NP_001025125) with a C-terminal MYC/DDK tag, was expressed in HEK293 cells.
Species	Human
Source	HEK293
Description	CDNF (Cerebral Dopamine Neurotrophic Factor) is a Protein Coding gene. Diseases associated with CDNF include Baritosis and Indolent Systemic Mastocytosis. Gene Ontology (GO) annotations related to this gene include growth factor activity. An important paralog of this gene is MANF.
Molecular Mass	21 kDa
AA Sequence	MWCASPVAVVAF CAGLLVSHPVLTQQQEAGGRPGADCEVCKEFLNRFYKSLIDRG VNFLDITIEKELISFCLDTKGKENRLCYLLGATKDAATKILSEVTRPMSVHMPAMKIC EKLKKLDSQICELKYEKTLDLASVDLRKMRVAELKQILHSWGEECRACA EKTDYVNL I QELAPKYAATHPKTELTRTRPLEQKLISEEDLAANDILDYKDDDDKV
Purity	> 80% as determined by SDS-PAGE and Coomassie blue staining
Stability	Stable for 3 months from receipt of products under proper storage and handling conditions.

 Tel: 1-631-559-9269 1-516-512-3133

 Email: info@creative-biomart.com  Fax: 1-631-938-8127

 45-1 Ramsey Road, Shirley, NY 11967, USA

Storage	Store at -80 centigrade. Avoid repeated freeze-thaw cycles.
Concentration	50 µg/mL as determined by BCA
Storage Buffer	100 mM glycine, 25 mM Tris-HCl, pH 7.3.
GENE INFORMATION	
Gene Name	CDNF cerebral dopamine neurotrophic factor [Homo sapiens (human)]
Official Symbol	CDNF
Synonyms	CDNF; cerebral dopamine neurotrophic factor; arginine rich, mutated in early stage tumors like 1, ARMETL1; conserved dopamine neurotrophic factor; ARMET-like protein 1; arginine-rich, mutated in early stage tumors-like 1; ARMETL1;
Gene ID	441549
mRNA Refseq	NM_001029954
Protein Refseq	NP_001025125
MIM	611233
UniProt ID	Q49AH0

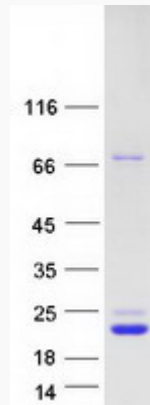
 Tel: 1-631-559-9269 1-516-512-3133

 Email: info@creative-biomart.com  Fax: 1-631-938-8127

 45-1 Ramsey Road, Shirley, NY 11967, USA



SDS-PAGE



Tel: 1-631-559-9269 1-516-512-3133

Email: info@creative-biomart.com Fax: 1-631-938-8127

45-1 Ramsey Road, Shirley, NY 11967, USA