

Recombinant Human CDO1 Protein (Met1-Asn200), N-His tagged

Cat. No. CDO1-0980H Lot. No. (See product label)

SPECIFICATION

Product Overview	Recombinant human CDO1 (Met1-Asn200) fused with the N-terminal His tag was expressed in E. coli.
Species	Human
Source	E.coli
ProteinLength	Met1-Asn200
Form	Lyophilized powder/frozen liquid
Molecular Mass	22 kDa
Purity	>90% as determined by SDS-PAGE.
Notes	For research use only.
Storage	Use a manual defrost freezer and avoid repeated freeze thaw cycles. Store at 2 to 8 centigrade for one week. Store at -20 to -80 centigrade for twelve months from the date of receipt.
Storage Buffer	Supplied as solution form in PBS or lyophilized from PBS.
Reconstitution	Reconstitute in sterile water for a stock solution.

 Tel: 1-631-559-9269 1-516-512-3133

 Email: info@creative-biomart.com  Fax: 1-631-938-8127

 45-1 Ramsey Road, Shirley, NY 11967, USA

Shipping They are shipped out with dry ice/blue ice unless customers require otherwise.

GENE INFORMATION

Gene Name	CDO1 cysteine dioxygenase, type I [Homo sapiens (human)]
Official Symbol	CDO1
Synonyms	CDO1; cysteine dioxygenase, type I; cysteine dioxygenase type 1; CDO; CDO-I;
Gene ID	1036
mRNA Refseq	NM_001801
Protein Refseq	NP_001792
MIM	603943
UniProt ID	Q16878

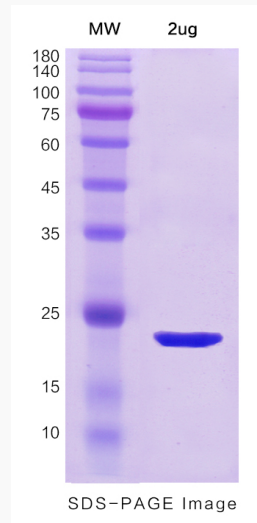
 Tel: 1-631-559-9269 1-516-512-3133

 Email: info@creative-biomart.com  Fax: 1-631-938-8127

 45-1 Ramsey Road, Shirley, NY 11967, USA



SDS-PAGE



Tel: 1-631-559-9269 1-516-512-3133

Email: info@creative-biomart.com Fax: 1-631-938-8127

45-1 Ramsey Road, Shirley, NY 11967, USA