

Recombinant Human CDO1 Protein, GST-Tagged

Cat. No. CDO1-1069H Lot. No. (See product label)

SPECIFICATION

Product Overview	Human CDO1 full-length ORF (NP_001792.2, 1 a.a. - 200 a.a.) recombinant protein with GST-tag at N-terminal.
Species	Human
Source	Wheat Germ
Description	CDO1 (Cysteine Dioxygenase Type 1) is a Protein Coding gene. Diseases associated with CDO1 include Hepatoblastoma. Among its related pathways are Viral mRNA Translation and Sulfur amino acid metabolism. GO annotations related to this gene include iron ion binding and cysteamine dioxygenase activity.
Molecular Mass	49.4 kDa
AA Sequence	MEQTEVLKPRTLADLIRILHQLFAGDEVNVEEVQAIMEAYESDPTEWAMYAKFDQYR YTRNLVDQGNGKFNLMILCWGEGHGSSIHDTNSHCFLKMLQGNLKETLFAWPK KSNEMVKKSERVLRENQCAYINDSIGLHRVENISHTPEAVSLHLYSPPFDTCHAFDQ RTGHKNKVTMTFHSKFGIRTPNATSGSLENN
Applications	Enzyme-linked Immunoabsorbent Assay Western Blot (Recombinant protein) Antibody Production Protein Array
Storage	Store at -80 centigrade. Aliquot to avoid repeated freezing and thawing.

 Tel: 1-631-559-9269 1-516-512-3133

 Email: info@creative-biomart.com  Fax: 1-631-938-8127

 45-1 Ramsey Road, Shirley, NY 11967, USA

Storage Buffer 50 mM Tris-HCl, 10 mM reduced Glutathione, pH=8.0 in the elution buffer.

GENE INFORMATION

Gene Name CDO1 cysteine dioxygenase, type I [Homo sapiens]

Official Symbol CDO1

Synonyms CDO1; cysteine dioxygenase, type I; cysteine dioxygenase type 1; CDO; CDO-I;

Gene ID 1036

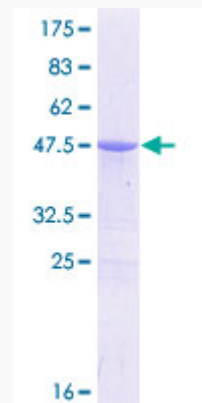
mRNA Refseq NM_001801

Protein Refseq NP_001792

MIM 603943

UniProt ID Q16878

**Quality Control
Testing**



12.5% SDS-PAGE Stained with Coomassie Blue.

 Tel: 1-631-559-9269 1-516-512-3133

 Email: info@creative-biomart.com  Fax: 1-631-938-8127

 45-1 Ramsey Road, Shirley, NY 11967, USA