

Recombinant Human CDO1 Protein, Myc/DDK-tagged, C13 and N15-labeled

Cat. No. CDO1-1371H **Lot. No.** (See product label)

SPECIFICATION

Product Overview	CDO1 MS Standard C13 and N15-labeled recombinant protein (NP_001792) with a C-terminal MYC/DDK tag, was expressed in HEK293 cells.
Species	Human
Source	HEK293
Description	Initiates several important metabolic pathways related to pyruvate and several sulfur compounds including sulfate, hypotaurine and taurine. Critical regulator of cellular cysteine concentrations. Has an important role in maintaining the hepatic concentration of intracellular free cysteine within a proper narrow range.
Molecular Mass	23 kDa
AA Sequence	MEQTEVLKPRTLADLIRILHQLFAGDEVNVEEVQAIMEAYESDPTEWAMYAKFDQYR YTRNLVDQNGKFNLMILCWGEGHGSSIHDTNSHCFLKMLQGKLNKETFPAWPK KSNEMVKKSERVLRENQCAVINDSVGLHRVENISHTEPVSLHLYSPPFDTCHAFDQ RTGHKNKVTMTFHSKFGIRTPNATSGSLENTRTRPLEQKLISEEDLAANDILDYKDD DDKV
Purity	> 80% as determined by SDS-PAGE and Coomassie blue staining
Stability	Stable for 3 months from receipt of products under proper storage and handling conditions.

 Tel: 1-631-559-9269 1-516-512-3133

 Email: info@creative-biomart.com  Fax: 1-631-938-8127

 45-1 Ramsey Road, Shirley, NY 11967, USA

Storage	Store at -80 centigrade. Avoid repeated freeze-thaw cycles.
----------------	---

Concentration	50 µg/mL as determined by BCA
----------------------	-------------------------------

Storage Buffer	100 mM glycine, 25 mM Tris-HCl, pH 7.3.
-----------------------	---

GENE INFORMATION

Gene Name	CDO1 cysteine dioxygenase type 1 [Homo sapiens (human)]
------------------	---

Official Symbol	CDO1
------------------------	------

Synonyms	CDO1; cysteine dioxygenase, type I; cysteine dioxygenase type 1; CDO; CDO-I;
-----------------	--

Gene ID	1036
----------------	------

mRNA Refseq	NM_001801
--------------------	-----------

Protein Refseq	NP_001792
-----------------------	-----------

MIM	603943
------------	--------

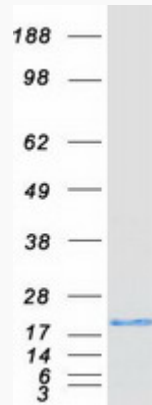
UniProt ID	Q16878
-------------------	--------

 Tel: 1-631-559-9269 1-516-512-3133

 Email: info@creative-biomart.com  Fax: 1-631-938-8127

 45-1 Ramsey Road, Shirley, NY 11967, USA

SDS-PAGE



 Tel: 1-631-559-9269 1-516-512-3133

 Email: info@creative-biomart.com  Fax: 1-631-938-8127

 45-1 Ramsey Road, Shirley, NY 11967, USA