

## Recombinant Human CDON Protein, GST-Tagged

Cat. No. CDON-1071H Lot. No. (See product label)

### SPECIFICATION

<b>Product Overview</b>	Human CDON partial ORF (NP_058648, 1155 a.a. - 1263 a.a.) recombinant protein with GST-tag at N-terminal.
<b>Species</b>	Human
<b>Source</b>	Wheat Germ
<b>Description</b>	This gene encodes a cell surface receptor that is a member of the immunoglobulin superfamily. The encoded protein contains three fibronectin type III domains and five immunoglobulin-like C2-type domains. This protein is a member of a cell-surface receptor complex that mediates cell-cell interactions between muscle precursor cells and positively regulates myogenesis. [provided by RefSeq, Aug 2011]
<b>Molecular Mass</b>	37.73 kDa
<b>AA Sequence</b>	VKVPVCLTSAVPDCGQLPEESVKDNVEPVPTQRTCCQDIVNDVSSDGSSEDPAEFSR GDSCAHSETEINIVSWNALILPPVPEGCAEKTMWSPPGIPLDSPTEVLQQPRE
<b>Applications</b>	Enzyme-linked Immunoabsorbent Assay Western Blot (Recombinant protein) Antibody Production Protein Array
<b>Storage</b>	Store at -80 centigrade. Aliquot to avoid repeated freezing and thawing.

 Tel: 1-631-559-9269 1-516-512-3133

 Email: [info@creative-biomart.com](mailto:info@creative-biomart.com)  Fax: 1-631-938-8127

 45-1 Ramsey Road, Shirley, NY 11967, USA

**Storage Buffer** 50 mM Tris-HCl, 10 mM reduced Glutathione, pH=8.0 in the elution buffer.

## GENE INFORMATION

**Gene Name** CDON Cdon homolog (mouse) [ Homo sapiens ]

**Official Symbol** CDON

**Synonyms** CDON; Cdon homolog (mouse); cell adhesion molecule related/down regulated by oncogenes; cell adhesion molecule-related/down-regulated by oncogenes; CDO; ORCAM; surface glycoprotein, Ig superfamily member; HPE11; MGC111524;

**Gene ID** 50937

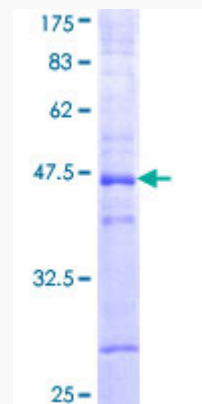
**mRNA Refseq** NM\_001243597

**Protein Refseq** NP\_001230526

**MIM** 608707

**UniProt ID** Q4KMG0

**Quality Control Testing**



 Tel: 1-631-559-9269 1-516-512-3133

 Email: [info@creative-biomart.com](mailto:info@creative-biomart.com)  Fax: 1-631-938-8127

 45-1 Ramsey Road, Shirley, NY 11967, USA



12.5% SDS-PAGE Stained with Coomassie Blue.

 Tel: 1-631-559-9269 1-516-512-3133

 Email: [info@creative-biomart.com](mailto:info@creative-biomart.com)  Fax: 1-631-938-8127

 45-1 Ramsey Road, Shirley, NY 11967, USA